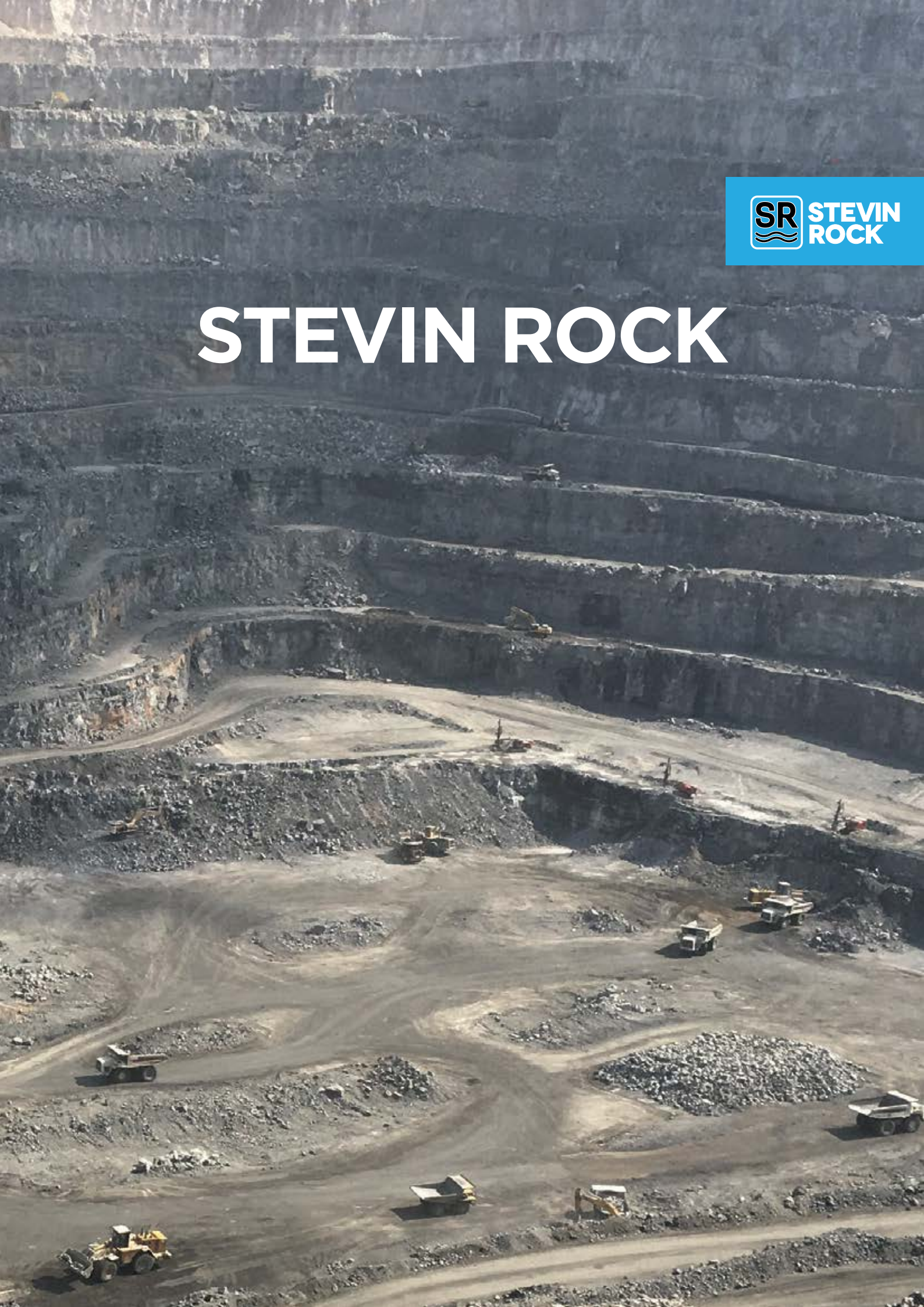




STEVIN ROCK





OVER
40
YEARS
OF EXCELLENCE



01	ABOUT US	02
02	OUR VISION, MISSION, CULTURE & VALUES	05
03	OUR STORY	06
04	KHOR KHUWAIR	08
05	AL GHAIL	10
06	KADRA	11
07	MAKING HEALTH & SAFETY A TOP PRIORITY	12
08	SUSTAINABLE DEVELOPMENT & CORPORATE RESPONSIBILITY	13
09	ENVIRONMENT	14
10	QUALITY, OUR ONGOING PROMISE	17
11	TECHNICAL PROFICIENCY	18
12	OUR MANAGEMENT & WORKFORCE	20
13	OUR VISION FOR A BETTER FUTURE	22
14	CONTACT US	24

01/



ABOUT US

STEVIN ROCK IS A WORLD CLASS QUARRYING COMPANY, OPERATING SINCE 1978 IN THE EMIRATE OF RAS AL KHAIMAH IN THE UNITED ARAB EMIRATES, PROVIDING THE HIGHEST QUALITY MATERIAL AND SERVICES TO THE CONSTRUCTION, CEMENT, STEEL AND MINING INDUSTRIES IN THE GULF REGION AND ABROAD.

As one of the largest quarrying companies in the world Stevin Rock has the capacity to produce and sell more than 80 million tonnes per year of high-quality limestone, dolomite and gabbro. Our products range includes fine sand to coarse aggregate for asphalt, ready-mix plants, land reclamation, white beach sand, core and armour rock for sea defence/breakwater marine projects for the construction industry as well as feedstock for the cement, steel, chemical, glass and mining industries in the UAE, Gulf countries and beyond.

The three sites operated by the Company in Ras Al Khaimah have reserves estimated at around 4.5 billion tonnes and have produced with consistency and reliability various types of products individually tailored to customer's requirements.

Stevin Rock has supplied construction material for world class projects in the UAE and Gulf countries including the iconic Burj Khalifa, Palm Jumeirah and the World Islands in Dubai, the Dubai Mall, the Dubai metro, port constructions and expansions in the UAE, Kuwait, Iraq, etc.

Stevin Rock's efficiency and success result from over 40 years of continuous improvement and growth. The Company operates to international standards with ISO and other recognised certifications.

Some of the projects that used Stevin Rock material:

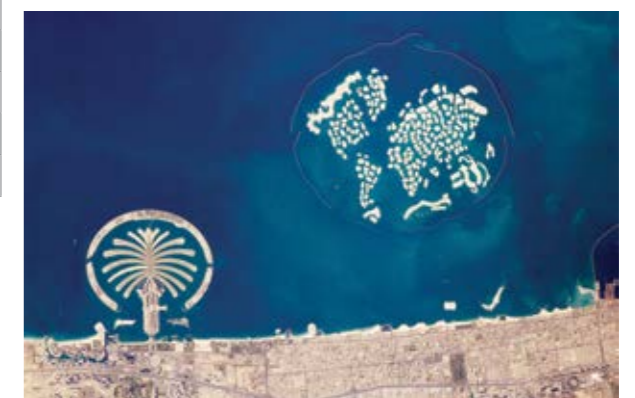
- Burj Khalifa (UAE)
- Abu Dhabi & Dubai International Airport expansions (UAE)
- Palm Jumeirah, Palm Jebel Ali & Palm Deira (UAE)
- Zakum Islands (UAE)
- Boubean Sea Port (Kuwait)
- New Doha Port (Qatar)
- Al Faw Port (Iraq)
- New Hidd Port Expansion (Bahrain)
- Dubai Mall, Festival City (UAE)
- Masdar (the first green city in the world)(UAE)

Operating to the latest International Standards:



Rocks (Coastal Protection & Sea Defence):

- Nakheel's ground-breaking Palm developments - Palm Jumeirah, Palm Jebel Ali and Palm Deira (UAE)
- The World (UAE)
- Kuwait Waterfront development (Kuwait)
- Khalifa Port and Saadiyat Island (UAE)
- Pearl of Qatar (Qatar)
- Jebel Ali Container Terminal (UAE)
- Deira Corniche (UAE)
- Boubean Sea Port (Kuwait)
- Messiliah Beach Hotel (Kuwait)
- Logo Islands (UAE)
- Lusail Development - Marine - earthworks and site preparation (Qatar)
- Qaffay Island and Al Yasat Ali Island (UAE)
- Fintas Coastguard HQ (Kuwait)
- ZAKUM Islands (ADNOC Abu Dhabi, UAE)
- Satrah Razboot (SARB) Islands (ADNOC Abu Dhabi, UAE)
- Das Island Phase 3 (ADGAS Abu Dhabi, UAE)





OUR VISION, MISSION, CULTURE & VALUES

OUR VISION

To maintain and build on our position as one of the largest quarrying operators in the world and act as a sustainability leader in our industry.

OUR MISSION

To provide products of the best quality and services of the highest standard to the entire satisfaction of all our customers in a safe and sustainable manner.

OUR CULTURE

- To continuously improve our productivity through the use of the latest technologies and equipment by an experienced and qualified international management team.
- To ensure that all our customers are fully satisfied with the quality of our products and the efficiency of our service through rigorous quality control procedures and highly professional behaviour.
- To keep health and safety a top priority in all our activities through procedures, training and awareness campaigns.
- To operate in a sustainable manner and reduce our environmental impact through numerous corporate policies and measures.

OUR VALUES

S - SOLID AS A ROCK
Strength in Commitment

T - TEAMWORK
Harnessing Team Power

E - ETHICAL
Do the Right Thing



V - VALUE
Serve the Customer through Quality Products

I - INNOVATIVE
Continuous Improvement through research

N - NURTURE
Care for Employees and the Environment

03/

OUR STORY

1967

Start of quarrying operations at Khor Khuwair through an agreement between His Highness Sheikh Saqr, Ruler of Ras Al Khaimah and a German company: Held and Francke Bauaktiengesellschaft to supply rocks for the construction of the port in Abu Dhabi.

1978

Constitution of Stevin Rock as a 100% subsidiary of Volker Stevin, a Dutch civil engineering company, to produce and supply material for the Jubail Commercial Port in Saudi Arabia.

1990

Stevin Rock acquired by Italian dredging company Dragomar and formed a joint venture to support the building of the Ras Laffan Port in Qatar.

1996

Stevin Rock purchased by the Government of Ras Al Khaimah, hailing the beginning of an era of consolidation, expansion and strengthening.

2007

Joined forces with Ras Al Khaimah Rock Company (RAK Rock) to become one of the largest quarrying companies in the world.

04/

KHOR KHUWAI

ONE OF THE LARGEST QUARRIES IN THE WORLD

PRODUCTION CAPACITY WITH SISTER COMPANY RAK ROCK OF 60 MILLION TONNES PER YEAR OF HIGH QUALITY LIMESTONE PRODUCTS FOR THE CONSTRUCTION, CEMENT, STEEL AND MINING INDUSTRIES.



Adjacent to Saqr Port, one of the largest dry bulk commodity ports in the Gulf region with a capacity of over 70 million tonnes per year thanks to the recent commissioning of two deep water berths able to accommodate capesize vessels.

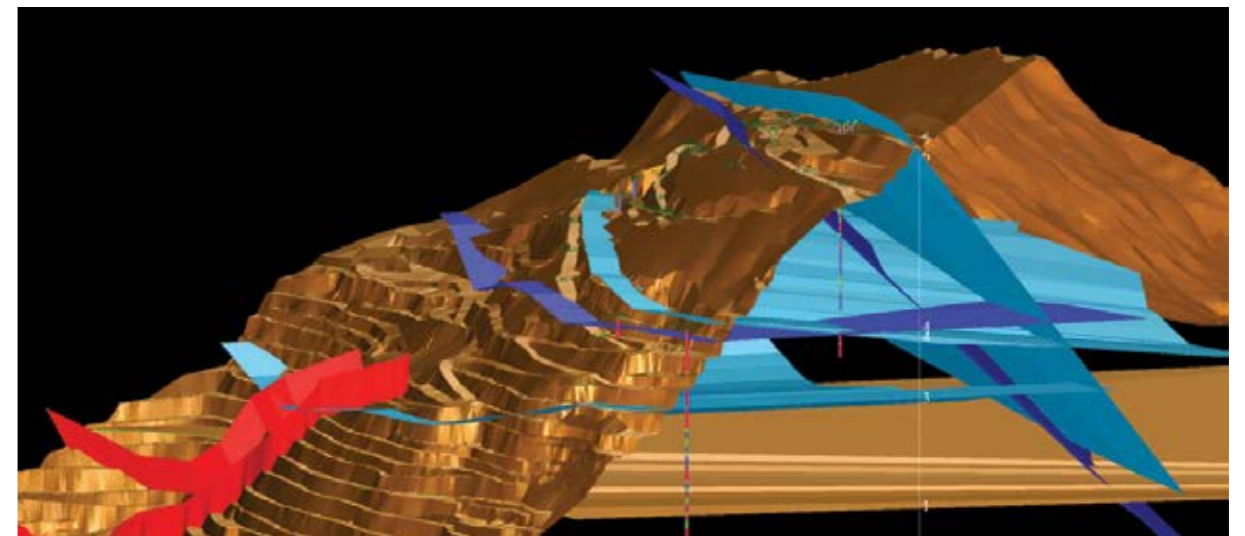
Thorough grade control procedures with systematic sampling of blast hole chips.

Use of state of the art and latest technologies and equipment including:

- High accuracy drone topographical surveys
- Digital production tracking
- 3D modelling
- Production management software
- Laboratory equipment (XRF, XRD, etc.)

Exploration core and reverse circulation drilling together with geological mapping, logging and sampling to produce a 3D geological model of the limestone deposit and to optimise mine planning:

Khor Khuwair in Figures	
• Reserves of 2.5 billion tonnes of limestone	
• Production capacity of 60 million tonnes per year or 6,800 tonnes per hour	
• Over 35km of working benches giving exposed reserves of more than 25 million tonnes	
• 29 working benches 15m high with a total extraction height of 680m from pit floor	
• 22 crushing lines producing over 50 types of material individually tailored to customers' requirements	
• 10.5km of in-pit conveyors	
• 5.5 million tonnes of strategic buffer stock	
• Over 180 dump trucks of 50 and 100 tonnes capacity	
• 100 shovels and excavators	
• 80 articulated lorries 58 tonnes capacity	



05/

AL GHAIL

SOURCE OF A UNIQUE PRODUCT

AL GHAIL PRODUCES LIMESTONE AND DOLOMITE FOR THE LOCAL AND INDIAN MARKETS WITH A CURRENT CAPACITY OF OVER 15 MILLION TONNES PER YEAR, DUE TO INCREASE TO 20 MILLION TONNES.

Al Ghail quarry produces a unique, high-quality limestone as construction sand and aggregate which is in high demand in the UAE, Gulf countries and Asia markets.

A very attractive white beach sand is a new product proposed for prestigious real estate developments.

Industrial-grade dolomite is also produced to supply the largest steel companies in India.

Al Ghail in Figures

- 17.5 million tonnes per year production capacity of limestone and dolomite
- 7 crushers



06/

KADRA – HARD ROCK FOR THE MOST TESTING APPLICATIONS

KADRA HAS A PRODUCTION CAPACITY OF 7 MILLION TONNES PER YEAR OF GABBRO AGGREGATES FOR ASPHALT AND READY-MIX PLANTS.

Because gabbro rock is hard and highly abrasive, the working environment of the Kadra quarry is extremely challenging, requiring a level of operational excellence which is second to none.

Material produced by the site's five crushing lines supplies the local market, in particular Dubai and Abu Dhabi, and is also exported to Gulf countries.



07/

MAKING HEALTH AND SAFETY A TOP PRIORITY

THIS IS DEMONSTRATED BY THE ISO 45001 CERTIFICATION THAT IMPLEMENTS ALL NECESSARY MEASURES TO ENSURE FULL UNDERSTANDING AND COMPLIANCE OF THE COMPANY'S INTEGRATED MANAGEMENT SYSTEM BY ALL THE PARTIES INVOLVED.

We are committed to act in a responsible manner and to implement all necessary measures to:

- Achieve zero harm, injuries and loss of life
- Have safe, healthy and hygienic working conditions
- Continuously improve the working atmosphere

Zero Accident Objective:

We provide our entire workforce with regular safety awareness training and competency development, through a process of engagement and participation designed to protect all our employees with an objective of zero accident.



STEVIN ROCK HEALTH & SAFETY TEAM

08/

SUSTAINABLE DEVELOPMENT & CORPORATE RESPONSIBILITY

Stevin Rock, through a right balance between strong economic performances, protection of its environment and great care for its employees, contributes to an effective and sustainable development of the Company within the surrounding communities.

The Company has implemented a community centre, cinema nights, social games, etc. for the benefit of its blue-collar workforce. Stevin Rock is also sponsoring cultural and sport events as well as scientific research and personal development programmes. It is also involved with associations for disabled and special needs persons.



CONCERT SPONSORED BY STEVIN ROCK & RAK ROCK

09/

ENVIRONMENT

DELIVERING ON OUR ENVIRONMENTAL COMMITMENTS

Stevin Rock has always been striving to protect the beautiful environment in which its operations are located.

Environmental control measures have accounted for as much as 10% of the Company's capital expenditures in recent years and we have implemented and maintained an Environmental Management System that meets all the requirements of ISO 14001:2004.

Stevin Rock is committed to continuously develop environmental policies in order to minimise its environmental impact on the surrounding eco-system and local communities.

We work in close cooperation with Ras Al Khaimah Environment Protection

and Development Authority (EPDA) and have introduced advanced dust extraction systems across all of our sites. We have totally enclosed all crushers, screens, product bins and most of our conveyor systems.

Stevin Rock is also implementing Go-Green initiatives such as planting of trees, flowers and grass as well as waste management, water saving through recycling, energy saving, reduction of CO₂ emissions, etc.

Our entire workforce undergoes environment training as part of our efforts to maintain the standards of our company to internationally recognised levels, to keep improving the industry's image and to minimise its impact on the environment as much as possible.



SPRAYING WATER MIST ONTO AGGREGATE STOCKPILES AT STEVIN ROCK HARBOR



GO-GREEN INITIATIVES WITH THE PLANTING OF TREES, FLOWERS AND GRASS

PROMOTING BEST PRACTICE

The many environmental measures we have taken to reduce our environmental impact include:

- Working with environmental consultants to identify innovative solutions
- Systematic watering of haulage roads and working areas
- Water mist spraying of conveyors and stockpiles
- Rock blasts designed to minimise noise and dust
- Systematic sweeping of roads
- Full encapsulation applied to all conveyors and crushers
- Wheel washing of all outgoing vehicles that also have their loads covered



SYSTEMATIC SWEEPING OF ROADS



QUALITY, OUR ONGOING PROMISE

OUR CUSTOMERS' SATISFACTION IS OF PARAMOUNT IMPORTANCE. STEVIN ROCK IS COMMITTED TO MAINTAIN THE HIGHEST LEVEL OF QUALITY OF ITS PRODUCTS AND SERVICES, RECOGNISED BY THE COMPANY'S ISO 9001 CERTIFICATION, THROUGH THE USE OF STATE OF THE ART EQUIPMENT SUPERVISED BY HIGHLY QUALIFIED AND EXPERIENCED MANAGEMENT, TOGETHER WITH STRINGENT QUALITY ASSURANCE PROCEDURES.

ISO 9001 certification as well as adherence to many other international standards confirm we deliver the high quality we promise.

Our quality assurance system uses the latest technologies including computer-aided quarry design and production management,

high resolution drone topographical surveys, state of the art analytical equipment and covers every phase of operations, from geological investigations through drilling, blasting, hauling and crushing to shipping by road or by sea.

Some of the state of the art equipment used for analysis:



X-RAY DIFFRACTION (XRD)



X-RAY FLUORESCENCE (XRF)

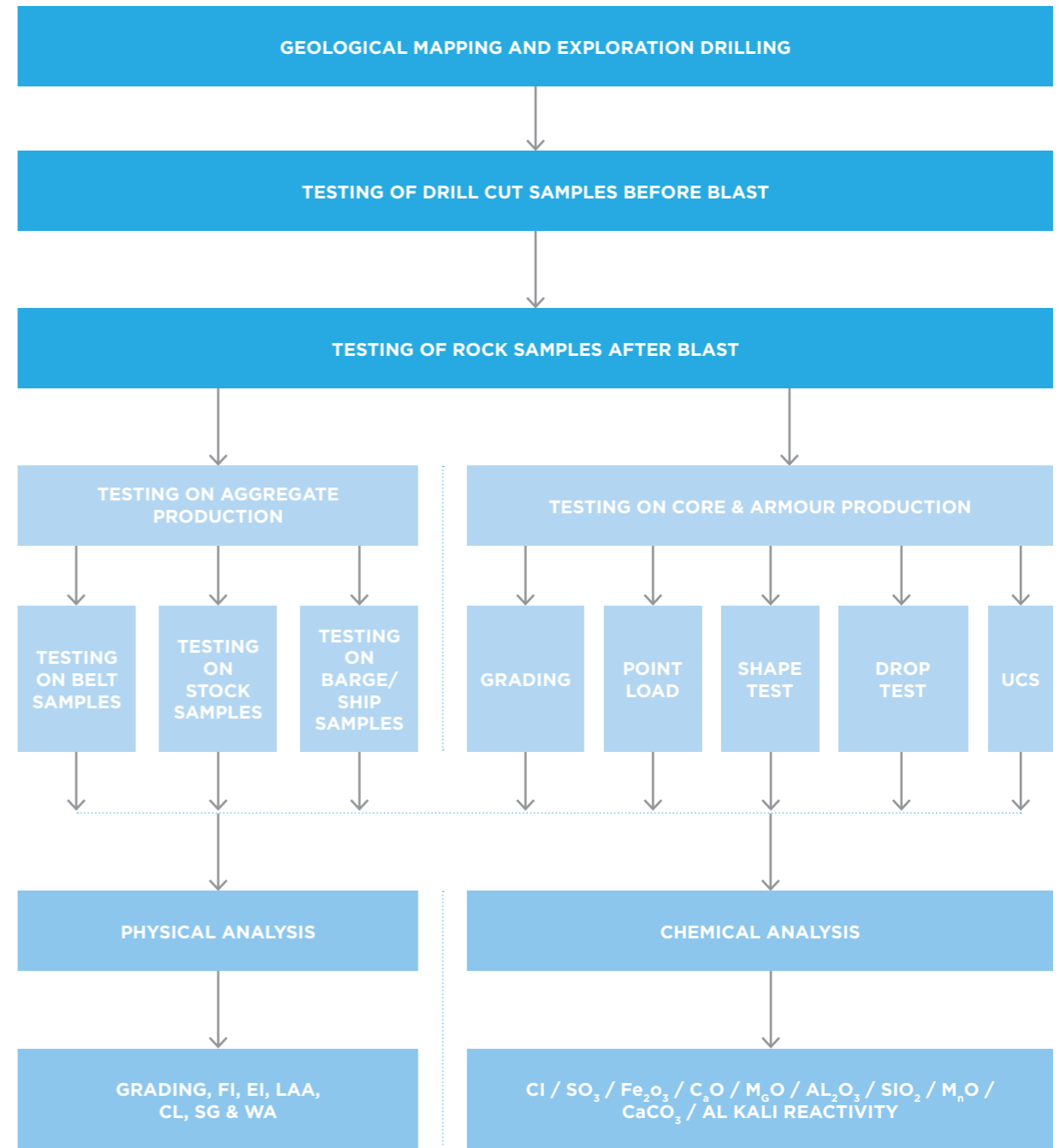


TECHNICAL PROFICIENCY

STEVIN ROCK DELIVERS A WIDE VARIETY OF DEPENDABLE TAILORMADE HIGH QUALITY PRODUCTS TO SUIT THE REQUIREMENTS AND EXPECTATIONS OF ITS CUSTOMERS THROUGH THE USE OF ROBUST PROCESSES IN A LARGE NUMBER OF CRUSHING LINES.

Our products range includes fine sand to coarse aggregate for asphalt, ready-mix plants, land reclamation, white beach sand, core and armour rock for sea defence/

breakwater marine projects for the construction industry as well as feedstock for the cement, steel, chemical, glass and mining industries.





OUR MANAGEMENT & WORKFORCE

STEVIN ROCK HAS A HIGHLY QUALIFIED AND EXPERIENCED INTERNATIONAL MANAGEMENT TEAM SUPERVISING OVER 3,000 DEDICATED EMPLOYEES, ALL OF WHOM CONTRIBUTE TO THE SUCCESS OF THE COMPANY.

Management and staff collaborate closely to maintain and develop operational excellence, efficiency and profitability of Stevin Rock operations.

The Company empowers its employees and develops their abilities through training for the use of the latest equipment and technologies.

The personnel is evaluated on a yearly basis on well-defined objectives and rewarded on merit.

Well-defined key performance indicators (KPI) are used to monitor and improve production performance, sales targets, procurement, maintenance, etc; they involve managers and employees and make them accountable.

TOP MANAGEMENT:

Dr Naser Al Bustami

Chief Executive Officer

Naser is the Board Director and Chief Executive Officer of Stevin Rock, RAK Rock and Raknor. Combined, the companies have a yearly turnover in excess of US\$ 500 million and a workforce of nearly 4,000 employees. Naser has 30 years of experience in technical and commercial management of numerous multi-billion dollar projects in the region. He holds a BS degree in Civil Engineering, Masters (MBA) degree and a Doctorate (DBA) in Business Administration.

Graham Farrington

Chief Operating Officer

Graham is a Board Director and Works Manager. Graham has an extensive 34 years' experience in the quarrying and mining industries, having worked in a widely diversified range of roles and spanning multiple continents.

Graham is the holder of an honours degree in Mining Engineering from Nottingham University UK, and an MBA with distinction from the University of Warwick, UK.

Paul Fenby

Chief Financial Officer

Paul is the Chief Financial Officer for all of the group companies. He has more than 30 years' experience in extractive industries from finance, commercial and management roles within national and international companies, and has been based in the UK, Egypt, Kazakhstan, Malaysia and Indonesia. Paul is a Fellow of the Institute of Chartered Accountants in England and Wales

Daniel Racine

Chief Commercial Officer

Daniel is the Chief Commercial Officer, and brings commercial experience gathered over 20 years in the construction materials industry. He has led large sales forces across a diversified portfolio of products including Timber, Ready Mixed Concrete and Quarrying on multiple continents, and has a track record of winning and delivering on large and complex projects. He is passionate about customers and ensuring that we always live up to the commitments we make as an organisation. He has studied Executive Management in Australia at NSW University



IN-HOUSE HEAVY EQUIPMENT SIMULATOR

13/

OUR VISION FOR A BETTER FUTURE

EFFICIENT GROWTH WITH SUSTAINABILITY COMMITMENT

Stevin Rock will continue to grow by increasing its output and variety of products while maintaining its sustainability commitment by:

- Developing guidelines and policies to help employees adopt sound environmental work practices
- Providing adequate training suited to all employees
- Ensuring that personnel skills and competencies are maintained to well above acceptable standards
- Acting responsibly and swiftly correcting conditions that endanger personnel and environment
- Promptly investigating environmental incidents with the relevant authorities
- Using reasonable endeavours to reduce the use and to recycle all types of materials
- Managing all waste disposal to protect the environment
- Minimising energy and water use as well as greenhouse gas emissions
- Preventing pollution of the environment in particular of air and water
- Adopting technologies and processes to improve energy efficiency and water conservation
- Using knowledge and experience to maintain and improve our environmental sustainability
- Contributing to local biodiversity via go-green initiatives
- Looking for innovative solutions to improve the Company's efficiency in all fields

14/

CONTACT US

STEVIN ROCK L.L.C.
PO BOX 559, RAS AL KHAIMAH
UNITED ARAB EMIRATES

T +971 7 258 8666 F +971 7 258 8777
E STEVIN@EMIRATES.NET.AE

FOLLOW US: [f](#) [in](#)

STEVINROCK.AE

