

PRE-QUALIFICATION FILE



www.emiratesglass.com

VISION

To be the most esteemed in the glass industry for delivering top-class, innovative glass products in a timely manner, with the best quality and in an increasingly strengthened, widened and respected presence on the world map.

MISSION

As a pioneer in architectural glass coatings in the UAE, our mission is to increase market penetration in the gulf and beyond through a flexible approach to diversification and product development in line with dubai investments' mission to facilitate further investments and a platform for continuous growth.

Welcome Note



To:
Quality Department
Emirates Glass, Dubai



Subject: Mission & Vision statement of Dubai Investments

Mission:

To add value to grow its investment profile through active strategic stewardship and leveraging its corporate brand, business promotion capabilities, network of relationships, and financial resources.

Vision:

To deliver superior management performance and services which benefit investors To deliver superior returns to its shareholders, in accordance with pre-defined risk profile and comparable to similar best-in-class corporations in the world. To increase the value of its business through the use of highly efficient business structures and practices.



Khalid Kalban
MD & CEO
Dubai Investments PJSCa

Management Personnel



DR. SAMIH YEHIA

Sales & Business Development Director
Emirates Glass LLC

Ph.D in Sustainable Business Management, British University in Dubai
MS.C in Strategic Planning, University of Hertfordshire, UK

Experience:

Over 15 years in UAE of which 10 years in Emirates Glass

• Export Manager	Emirates Glass LLC	2 years
• Sales Manager	Emirates Glass LLC	3 years
• Area Sales Manager	Emirates Glass LLC	3 years
• Sales Manager	Suweidco Trading LLC	2 years
• Sales Supervisor	Aqaar Properties LLC	2 years
• Sales Executive	Robust Contracting	2 years



SANDEEP NAIR

Senior Manager QA/QC
Emirates Glass LLC

Bachelor of Engineering, University of Mumbai, India

Experience:

Overall 15 years of experience in Quality Assurance out of which 11 years have been in the Glass industry in the Middle East.

• QA Supervisor	Emirates Glass LLC	3 years
• QA Manager	Unique Chemoplant Equipments, India	4 years



MARCO KOHS

Coating Manager
Emirates Glass LLC

Electrical Engineering, Germany

Experience:

Over 20 years of experience in Glass Coating Industry in European and Gulf region.

• Process Engineer	Q- Cells Soutor	2 years
• Process Engineer	Guardian Industries	1.5 years
• Process Engineer	Glass Trösch	6 years



MARIE KHOURI

Customer Service Manager
Emirates Glass LLC

Bachelor of Business Administration, American University of Beirut

Experience:

Over 15 years in UAE of which 10 years in the building materials and glass industry

- | | | |
|-----------------------------|--------------------|---------|
| • Administration Manager | IFF | 4 years |
| • Material Planning Manager | Emirates Glass LLC | 6 years |
| • Marketing Manager | Zarooni Group | 5 years |



RODELLITO SAN JOSE

Production Planning Manager
Emirates Glass LLC

Bachelor of Science in Electrical Engineering

Experience:

Over 30 years of Professional Experience in Glass Processing Industry in Middle East.

- | | | |
|---|--------------------------------------|---------|
| • Head of Material & Production Planning Department | Zamil Glass Industries, Saudi Arabia | 7 years |
| • Customer Service Manager | Zamil Glass Industries, Saudi Arabia | 8 years |

About Emirates Glass



Emirates Glass LLC, a subsidiary of Glass LLC under Dubai Investments PJSC, was established in 1997 in Dubai's Al Quoz Industrial area. It was created to support the rapid growth of the local construction industry and has since become a leader in the production of processed architectural flat glass in the Middle East.

At the heart of Emirates Glass operations is the manufacture of tempered glass under the EmiCool® range. This includes solar control, multi-functional Low-E, and standard Low-E glass designed to minimize solar heat gain in air-conditioned buildings in the Gulf region.

Starting with a Leybold (Germany) 6-cathode coating line with a loading bed of 2440 x 3600mm and an annual capacity of 750,000 sqm, Emirates Glass has since upgraded to a 20-cathode line from Applied Materials GmbH. This new line features a loading bed of 3300 x 7000mm and an annual capacity of 3,500,000 sqm, allowing the company to enter a new market of post-temperable stock sheets for finished architectural glass products. The addition of the TERRA-G coater has enabled the development of innovative products like the SOLITE DOUBLE SILVER, SUPERLITE & SUPER VISION Temperable Double Silver, ELITE SOLAR-LOW-E coating on Clear and CLASSIC ST range of solar control color coating on clear.

The company has enhanced its offerings with the installation of the Vortex Pro Turbo Series high-performance flat tempering line, capable of producing high-quality tempered glass up to 8 meters long. This state-of-the-art line is designed for high-performance coated glass with the lowest emissivity and highest quality.

Emirates Glass is now equipped with the cutting-edge LiSEC Jumbo Cutting Line, capable of handling and cutting glass sheets up to 8 meters. The incorporation of CNC technology ensures unmatched precision, and the autoloader machine automates the loading process, enhancing operational efficiency and reducing lead times. This investment has expanded Emirates Glass' capabilities, allowing for diverse applications in construction, architecture, and interior design.

The acquisition of the Vitro-Jet FS Jumbo digital printing production line from Tecglass marks a transformative leap in design flexibility and production efficiency for Emirates Glass. This advanced digital printing solution allows for high-resolution, intricate graphic designs on large glass sheets at unprecedented speeds, significantly reducing production time while enhancing flexibility. The Vitro-Jet FS Jumbo's Fast Frame Printing Tool revolutionizes installations, making it ideal for IG units, frameless windows, and solar panels.

The addition of the Automatic Seaming Line from Bentler enhances precision, superior edge quality, and efficiency, while reducing setup times and promoting eco-friendly production. This line includes grinding spindles with adjustable rotors, a water filtration system, and noise-protected exhaust fans, ensuring a quieter working environment and early dry glass after seaming through efficient cooling water extraction.

Soon to be installed, the SCHOLZ Jumbo Autoclave Line features Heat Soak Testing for quality assurance and an HMI Comfort Touch Panel for process visualization. It can laminate glass up to 3.3 m x 8.5 m and includes a Bogie Maneuvering Unit for handling loads up to 15,000 kg.

Upcoming installations of the Jumbo Flat Lamination Line and Jumbo IGU Line will complete Emirates Glass's status as a fully automated jumbo glass processing factory.





ADDITION OF HIGH-PERFORMANCE FLAT TEMPERING LINE

Emirates Glass L.L.C has relied on Glaston technology since 2000. They have invested in a new glass processing plant, GLASTON Jumbo Series-3380-470. The tempering line has state-of-art technology with industry leading online Quality measurement Glaston iLook and Edge Control feature. The new furnace holds a key position to process big glasses up to 8 meters.

The Jumbo Series-3380-470 tempering line offers the best heating accuracy available on the market and incorporates the fusion technology that enables flexibility for mixed production. The line is equipped with the iLook Distortion & Anisotropy reporting system that measures online glass distortions and anisotropy of each tempered glass that is processed. iLook makes sure that deviations are instantly reported and only top quality glass will be installed.

As the use of tempered glass is growing, issues related to quality have become more important and not least for glasses in bigger sizes. The Jumbo Series-3380-470 with iLook Distortion & Anisotropy is the perfect choice for glass processors who want to meet growing quality requirements in an up-to-date and efficient way.

KEY HIGHLIGHTS OF THE TEMPERING LINE

- Equipped with **iLook Distortion & Anisotropy Reporting System** for enhanced optical performance and aesthetics.
- Equipped with **Vortex Pro Convection System** with **energy efficient BPP Technology** that applies **convection heating only to the parts where it is needed thereby having considerable Energy Savings.**
- Best **Heating Accuracy Fusion Technology System** that enables flexibility for mixed production.
- Installed with **Machine State Summary** advising production efficiency and production hours.
- Helps compare production running on different times of the day through its **Production Performance Reports System.**



Addition Of Lisec Jumbo Cutting Line

Emirates Glass has installed the cutting-edge LiSEC Jumbo Cutting Line, representing a groundbreaking system designed to handle and cut glass sheets of up to an impressive 8 meters. The incorporation of state-of-the-art CNC technology ensures unmatched precision in every cut, along with the autoloader machine - an automated system designed for loading glass sheets to the Jumbo Cutting Line. This strategic investment aims to fully automate the loading process, eliminating the need for human intervention, streamlining the process, enhancing overall operational efficiency and reducing lead times. The machine has broadened Emirates Glass' horizons, allowing for diverse applications in construction, architecture, and interior design, setting new benchmarks in precision, efficiency, enhancing capabilities and reinforcing the commitment to delivering top-notch glass products.

Key highlights of the lisec jumbo cutting line

- Ability to cut maximum stock sheet size of **3.3 m x 9.0 m**
- Equipped with online **Edge Deletion** for different shapes & sizes
- **Auto Loader** facilitates automatic storage and issuance of standard & jumbo stock sheets – **no manual handling** involved



Addition Of Tecglass Jumbo Digital Printing Line

Acquisition of Vitro-Jet FS Jumbo digital printing production line from Tecglass marks a transformative leap in design flexibility and production efficiency for Emirates Glass. The Vitro-Jet FS Jumbo, an advanced digital printing solution tailored for large scale glass sheets, empowers Emirates Glass to reproduce high-resolution, intricate graphic designs and vibrant prints in the most varied sizes at unprecedented speeds, significantly reducing production time while enhancing flexibility and efficiency. From embellishing facades with vibrant motifs to illuminating interiors with captivating skylights or be it enhancing partitions for privacy and adorning doors with bespoke designs, Emirates Glass's products seamlessly integrate functionality and aesthetics. The Vitro-Jet FS Jumbo's exclusive Fast Frame Printing Tool revolutionizes installations, making it ideal for a wide range of applications including IG Units, frameless windows, and solar panels, demonstrating Emirates Glass's pursuit to meet the diverse aesthetic preferences of the industry.

Key highlights of the tecglass jumbo digital printing line

- Distinguishes **Emirates Glass** as **Exclusive Provider** capable of offering **Products with MSVD Coating applied on Printed Glass**
- Capable of **Printing on Surface#1** for **Architectural Applications**
- Expertise in printing **Premium Gold & Platinum colors**
- Ability to Print Jumbo Glass Sizes **3.3 m x 8.0 m** with **19mm thickness**
- Proficient in **matching any color-coding system**
- Ensures **Precision** and **Customization** In **Glass Coloring**



Automatic Seaming Line From Benteler

Addition of the Automatic Seaming Line at Emirates Glass from Benteler has garnered for precision, superior edge quality, reduced setup times, enhanced efficiency, and an eco-friendly production process. It utilizes grinding spindles with adjustable rotors, boasts short set-up times for streamlined operations and includes a water filtration system for sustainable production. Equipped with exhaust fans with noise protection, it ensures a quieter working environment. Additionally, the system enables early dry glass after seaming through efficient cooling water extraction.

Key highlights of the automatic seaming line

- Utilizes **Grinding Spindles** with **Adjustable Rotors** For **Smooth & Precise Edges**
- **Short Set-Up Times** for **streamlined operations**
- Incorporates a **Water Filtration System** for **Sustainable Production**
- Features **Exhaust Fans With Noise Protection**
- Enables **Early Dry Glass** after seaming, through **Cooling Water Extraction**



Addition Of Scholz Jumbo Autoclave Line

SCHOLZ JUMBO AUTOCLAVE LINE is equipped with Heat Soak Testing option for quality assurance and HMI Comfort Touch Panel for displaying values and visualization of the process. It can also laminate glass size of 3.3 m x 8.5 m. It also has a Bogie Maneuvering Unit for pushing the bogie (max weight: 15,000 kg).

Key highlights of the scholz jumbo autoclave line

- Equipped with Heat Soak Testing option for Quality Assurance
- Maximum Glass Lamination size of 3.3 m x 8.5 m
- HMI Comfort Touch Panel for displaying values and visualization of the process
- **Bogie Maneuvering Unit** for pushing the bogie (max weight: 15,000 kg)

EmiCool Products

EMICOOL RANGE OF PRODUCTS

1 Selective Double Silver

EmiCool® Solite is a spectrally selective glass having a wide light transmittance range from 28% to 71%. A U-value of 0.85 W/m²K can be achieved with 20 mm air gap and argon glass and a g/SHGC value of as low as 15. Edge deletion is required. The Solite series is top of the range quality where all the glass is tempered before coating. The coating can be applied on multiple glass sputtered like low-iron, green, bronze, grey, green, azzurlite.

2 Temperable Double Silver

EmiCool® Superlite is a double silver temperable products with light transmittance range from 30% to 69%. A U-value of 1 W/m²K can be easily achieved with 20 mm air gap and argon glass and a g/SHGC value of as low as 15. Edge deletion is required. The Superlite series is a blue appearance double silver that can be applied on multiple tinted glass colors.

3 Single Silver

This category has two products.

EmiCool® Plus T

It is standard Low-E with a nominal light transmission of 70%. The coating retains the appearance of the substrate and can be used on surface 2 or 3. A U-value of 1.35W/m²K can be achieved with an air gap of 16mm and argon gas. Edge deletion is required.

EmiCool® Sun T

It is multifunctional Low-E that allows generous light transmission with low indoor reflection of 15% and lower optimum g/SHGC value. A U-value of 1.25W/m²K can be achieved with an air gap of 16mm and argon gas.

4 Solar Color Low-E

EmiCool® E-lite is colored solar control coating on clear glass with low emissivity property. The glass can achieve very low g/SHGC values with optimum U-value ratings as low as 1.25W/m²K with a 16mm air gap and argon gas. As the coating is applied onto clear glass, we can offer designers and processors a wide range of sizes readily available from stock. We also provide Elite in 3 Bluegreen variances (Bluegreen 30, 40 & 50). EmiCool® E-lite provides assured color consistency and exceptional RHG performance.

5 **Solar Color Low-E**

This category has two products:

EmiCool® ST

Similar to the E-lite range, the EmiCool® ST series is applied on clear glass. It is solar control coating that provides excellent color rendering uniformity index and superior solar resistance. The colors available are gold, blue, green, grey, bronze, light grey, and bluegreen.

EmiCool® Classic T

Originally designed for hot sunlit climates, the product has a proven record of over a decade. More than 5 million sqm of this glass is installed in buildings in various countries around the world. This range has excellent color uniformity and can be installed as single glazed spandrel. It does not require edge deletion.

Emirates Glass is the only company in the region that has adopted the strategy of producing the glass from start to end. Emirates Glass procures the raw glass from sister company located in Abu Dhabi named Emirates Float Glass. The coating line is located in DIP, Jebel Ali while the processing of the glass includes cutting, tempering, lamination, ceramic frit, and double glazing is takes place in Al Quoz Industrial Area 4.

Emirates Glass has also experience in special production like Smart Glass, Mesh, and Digital Printing before coating, triple glazing, and jumbo size glasses with width of glass that can be as wide as 3.2 meter while length can reach up to 6 meters.

List of Projects

List of Projects



Project Name	Location	Aluminum Sub- Contractor	Glass Type
A2 A3 Emaar The Address	Dubai - UAE	Reem Emirates Aluminium	Superlite 70/40 On Grey
Abu Dhabi Future Schools (Musnada)	Abu Dhabi - UAE	Multiple Aluminium Fabricators	Elite Bluegreen40 / NN40T Bluegreen
Abu Dhabi Islamic Bank HQ	Abu Dhabi - UAE	Technical Glass & Aluminium Co.	Solite Mistral On Grey
AD Shooting Club Residence	Abu Dhabi - UAE	Arabian Aluminium Co. LLC	DSR II On Clear
ADNOC Business Center	Abu Dhabi - UAE	Alumena	Solite Ciel
ADNOC Staff Accommodation	West Region - UAE	Al Jaber Aluminium	Sun NN50T On Bronze
ADNOC West Lobby	Abu Dhabi - UAE	Alumena	Solite Ciel
Ajman One (12 Towers)	Ajman - UAE	Aluglasstech	Sun NN60 On Bluegreen
Akoya G+7	Dubai	Multiple Aluminium Fabricators	Solite Jar
AKOYA Damac Hills	Dubai - UAE	Reem Emirates Aluminium	ST Bronze/ NE370T
AKOYA Oxygen (13,000 Villas)	Dubai - UAE	Multiple Aluminium Fabricators	Superlite 70/40 On Bronze & Elite Blue40
Al Ain Mixed Use Development	Al Ain - UAE	Alumetal	Solite Zircon Green
Al Attar Tower	Dubai - UAE	Thani Industries	RB-20 & NE270 On Bronze
Al Badr Development	Dubai - UAE	Prime Metal/ Dubai Islamic Bank	Solite Zircon Clear
Al Falasi	Dubai - UAE	Bin Lahej Aluminium	Classic SS-14
The View Tower	Abu Dhabi - UAE	Al Tadamoun Aluminium	Sun NN60T Caribaa
Al Forsan Town Square	Abu Dhabi - UAE	Fibrex Aluminium	DSR II On Clear
Al Gariba Villas (580 Villas)	Al Ain - UAE	Reem Emirates Aluminium	Sun NN40T On Clear
Al Gaz Bldg.	Dubai - UAE	Al Abbar Aluminium	Classic RB-14
Al Ghalia Tower	Dubai - UAE	Siraj Aluminum	Classic SS20T + NN65 Clear
Al Hai Complex	Dubai - UAE	Al Fahya Aluminium	Classic SS-08
Al Hawaii Tower	Dubai - UAE	Al Abbar Aluminium	Classic SS-08
Al Hilal Business Tower	Fujairah - UAE	Jiangsu	Sun NN40T On Blue
Al Jaida Sales Center	Sharjah - UAE	Multiple Aluminium Fabricators	10mm Solite Mistral On Clear
Al Jazeera Club Tower	Abu Dhabi - UAE	Al Shams Aluminium & Glass	Sun NN50 On Blue
Al Maktoum Passenger Terminal	Dubai - UAE	Hanlim	Sun 12mm NN60 T Clear
Al Mamzar Tower	Dubai - UAE	Belgium Aluminium	ST Blue/ NE370T
Al Manara Tower (420 Villas)	Sharjah - UAE	Alico	Classic SS-14
Al Mirfaa Villas - Musnada	West Region - UAE	Sasco/ Al Nasr Steel	Sun NN25T On Clear

List of Projects



Project Name	Location	Aluminum Sub- Contractor	Glass Type
Al Rayan Tower	Abu Dhabi - UAE	Classic Aluminium	Elite Green 30
Al Omran Bldg.	Sharjah - UAE	Hamarain Industries	Classic SS-08 On SG Green
Al Owais Tower	Rolla - Sharjah	Alutech	Classic CR14t Blue
Al Qana	Abu Dhabi - UAE	Al Jaber Aluminium- Petra Gulf- Prime	Super Neutral 70
Al Raha Garden Villas	Abu Dhabi - UAE	Al Jaber Aluminium	NE270T Plus On Grey
Al Raha Residential (SBD)	Abu - Dhabi - UAE	White Alum	Elite Bluegreen40
Al Sad & AL Yaher Villas (Musnada)	Al Ain- UAE	Al Jaber Alum	Sun NN25T On Clear
Al Samha Villas (Musnada)	Abu Dhabi - UAE	Reem Emirates Aluminium	Sun NN25T On Clear
Al Shahama Residence	Abu Dhabi - UAE	Alumena	Elite Green30
Al Sour Tower	Kuwait	Alico-Kuwait	Classic CR14/NE370
Al Thuraya Primary Gateway	Sharjah - UAE	Alico	Classic TS-30
Al Yaher & AL Saad 500 Villas (Musnada)	Al Ain - UAE	Al Jaber Aluminium	Sun NN25T On Clear
Al Zubair Bldg	Dubai - UAE	Al Fahya Aluminium	Classic SS-08
Alum Services - MSCEB Bldg	Bahrain	Aluminium Services WLL	Classic SS14
American Hospital	Dubai - UAE	Alico	Classic SS14/NE370 On Clear/Green
Amiri Court	Bahrain	Gulf Glass Industries	Classic SS-14
Amwaj Tower	Salimiyah - Kuwait	Hassan Abul	NE270T Plus On Azzurlite
Arenco Hotel	Dubai - UAE	Zebian	Sun NN35T Bluegreen
Ashjar (8 Buildings)	Dubai- UAE	Reem Emirates Aluminium	Solite Mistral
Aviation Club Hotel	Dubai-UAE	Alico	Sun NN60 On Green/ NN40 Clear
Aviation College	DSO	DRA	Classic GY 35T Clear+ NE370T
Bakhath Tower	Karachi- Pakistan	Profile System	Sun NN40T On Clear
Bank Of India	India	Ahluwalia Contracts(India)Limited	Sun NN70 On Grey
Bank Of India Corp. Bldg	Mumbai-India	Aluplex	Classic SS-08
Beirut City Center	Lebanon	Alumco - Beirut	Solite Zircon On Clear/ LI
Bellvue Tower	Business Bay	Meraki	Solite Zircon On Clear
Binghatti Horizon	DSO	Binghatti Industries	Sun NN60T Grey
Binghatti- Jewels/ Views/Pearl/ Diamond	DSO	Binghatti Industries	Sun NN40T Grey
Binghatti- Vista/ Crystal/Star/ East & West/ Sapphire	DSO	Binghatti Industries	Sun NN30T Clear

List of Projects



Project Name	Location	Aluminum Sub- Contractor	Glass Type
Bridgestone Office Bldg.	Riyadh - KSA	Nafco	Classic GD-05
Business Center	Dubai - UAE	Thomas Bennett Gulf	Classic RB-14 On Clear
C.D/ Gopinath Chambers	Chennai - India	AGG	Classic SS-08
C1 Tower	Abu Dhabi - UAE	Alumena	Sun NN35T On Grey
C18 Tower	Abu Dhabi - UAE	Alumena	Elite Blue30/ CR14/ Solite Neutre
Cairo Bank	Sharjah - UAE	Al Hamad Aluminium	Classic GY-14
Caitainya Towers	Chennai - India	AGG	Classic SS-14
Capital House	Abu Dhabi - UAE	Spectrum Glass & Aluminium	Sun NN40T On Bronze
Capital Tower	Abu Dhabi - UAE	Thomas Bennett Gulf	Sun NN60T On Grey
Changi Airport	Singapore	Metro Asia	NE-73 Plus
Chicago Beach Resort	Dubai - UAE	Al Abbar Aluminium	Sun NN40T On Clear/ RB08
Citi Bank	Dubai - UAE	Alico	Sun NN-40
City Center Towers	Bahrain	Arcal	Elite Blue 30 Plus
City Hospital	Dubai - UAE	Alumetal	Solite Nutre On Green
City Seasons Hotel	Dubai - UAE	Al Hamad	Elite Blue 30 And ST Blue
Cognizant Technologies Solutions	Chennai-India	AGG	Classic SS20T On Blue
Cornish Tower	Abu Dhabi - UAE	Folcra Beach Industries	Elite Blue30/ NN35T On Blue
Corp. Executive Hotel & Offices	Dubai - UAE	Arabian Aluminium Co. LLC	Sun NN60 On Grey
Credit Libanais Tower	Beirut - Lebanon	Alumco	Sun NN50T On Green
Cyber H-Tech City	Hyderabad - India	AGG	Classic SS-08 On Green & Clear
DAFZA Airport Free Zone	Dubai - UAE	Thomas Bennet	Classic CR14T Blue
Danata	Dubai - UAE	Al Fahya Aluminium	Classic SS-08
Dbayeh Tower	Beirut - Lebanon	Alusteel	Solite Ciel
Deira City Center	Dubai - UAE	Al Abbar Aluminium	Classic SS-14 On Clear/ NE370T
Digital City Mall	Amman - Jordan	Alumco - Beirut	Sun NN50 On Clear
DIMC	Dubai - UAE	Gulf Glass Industries	Classic SS-14
DIMC-Meridian Hotel	Dubai - UAE	Hamarain Industries	Classic SS-14
DLF Gateway Towers	Mumbai - India	CEC	Classic SS-08 On Green
DLF Square / Nestle	Mumbai - India	CEC	Classic SS-08 On Blue

List of Projects



Project Name	Location	Aluminum Sub- Contractor	Glass Type
Doha City Center Expansion	Qatar	Al Habtoor Engineering	Solite Neutral
Domanion Business Center	Lahore - Pakistan	PAK Aluminium	Elite Blue40
Dome Complex	Saudi Arabia	Khalid Ali Al-Kharafi & Bros Co.	Sun NN35 On Clear
Dubai Chamber Extension	Dubai - UAE	Alumetal	Solite Zircon On Blue
Dubai International Airport	Dubai - UAE	Al Abbar Aluminium	NE-73 Plus On Azzurlite
Dubai Maritime City	Dubai - UAE	Alumetal LLC	Sun NN35 On Blue
Duja Tower	Dubai - UAE	General Aluminum	Classic SS25 On Clear & NE370T On Clear
East Hotel (M.O.E)	Dubai - UAE	Alumetal LLC	Classic SS08/NE370 On Clear
Emirates Towers	Dubai - UAE	Thani Benson / Al Abbar	IGU SS-08 / NE-370/ NN50T
Etihad Terminal 3	Abu Dhabi - UAE	Folcra Beach Industrial	NE270 Plus On Grey
Etisalat Dubai/ Abu Dhabi. Al Ain	Dubai - UAE	Al Fahya/ Alico/ GGI/ Arabin Ind	Classic SS-14 On Green
Fairmont Hotel	Abu Dhabi - UAE	Folcra Beach Industries	Sun NN50T On Blue
Five Hotel	Dubai - UAE	Reem Emirates Aluminium	Solite Ciel
Flame Tower	Baku - Azerbaijan	DekorAl Aluminium	Sun NN35 On Clear
Forte Grand	Abu Dhabi - UAE	Alumco	Sun NN-S1
Fujairah City Center	Fujairah - UAE	Alumetal LLC	Sun NN40T On Clear
Fujairah City Centre	Fujairah - UAE	Alumeta	Sun NN40T Clear+ Frit
Fujairah Tower	Fujairah - UAE	General Aluminum	
Garhoud Mixed Use	Dubai - UAE	Alumetal	Solite Neutre On Grey
Gayathi Villas	Western Region - UAE	Danway	Sun NN30T On Bronze
German University In Amman	Jordan	Aluminium System Company	Classic RB08 On Clear
GK Hospital	Gujarat - India	AGG	Classic SS-08
GM Trade Center	Karachi - Pakistan	PAK Aluminium	Classic ST Grey
Gold & Diamond Park	Dubai - UAE	Alumeta	Sun NN60 Blue 2000
Gulf Towers	Dubai - UAE	Thani Industries	Classic RB-08
Hameni Tower	Dubai - UAE	Meraki	NE270T Plus Bronze
Hard Rock Café	Dubai - UAE	Thani Industries	Classic SS-14
Hayi Development	Abu Dhabi - UAE	National Aluminium	Classic RB-14
Heydar Aliyev Cultural Center	Baku - Azerbaijan	Dia Holding	Sun NN40T On Low-Iron

Project Name	Location	Aluminum Sub- Contractor	Glass Type
Hidd AL Saadiyat (488 Villas)	Abu Dhabi - UAE	Al Jaber Aluminum	Solite Jar
Hilton Hotel	Jeddah - KSA	Nafco	Sun NN-50
Honda Showroom CJD & TE Body Shop	Sharjah - UAE	Obaid Al Shamsi Aluminium & Glass	NE270 Plus On Clear
HSBC	Doha - Qatar	Aluminium Technology	Classic RB-08
HSBC Regional HQ	Hyderabad - India	SP Fabricator	Classic SS-08 / NE-73
I Tower	Turkey	Feryapi	Sun NN50T On Clear
Ibn Batuta Hotel	Dubai - UAE	Alumetal	Sun NN50 T Blue
ICICI Bank	India	Aluplex India Pvt.Ltd.	Classic SS14 On Blue
IDBI Mumbai	India	Sezal Glass Ltd.	Sun NN35 On Bluegreen
Index Tower	Dubai - UAE	Arabian Aluminium	Solite Zircon On Grey
International Bowling Center	Dubai - UAE	Bosco Aluminium	Classic SS-08
Internet City	Dubai - UAE	Gulf Glass Industries	Classic RB-14 On Clear
IPIC HQ Building	Dubai - UAE	Folcra Beach Industrial Company	NE270 Plus On Bluegreen
IRENA HQ	Abu Dhabi - UAE	Folcra Beach Industries	Solite Neuter On Grey
IRIB	Tehran - Iran	Five Star	Classic SS-14
Jabal Omar	Dubai - UAE	Glass Specialized Industries/ Alumco	Elite Blue 30/ET On Blue
JAFZ	Dubai - UAE	Gulf Glass Industries	Classic SS-08
JBR	Dubai - UAE	Various	Sun NN50T Bronze
Jewel Of The Creek	Dubai - UAE	Al Abbar	ST Blue With NE370T Clear
Julphor Twin Tower	Saudi Arabia	Al Hamad Industrial Co.	Sun NN60 On Bluegreen
Kalpataru Square	Mumbai - India	Aluminium Glass	Classic SS-14/ NN35 On Green
KBT	Kuwait	Hassan Abul Co.	Sun NN60 On Clear/ Classic CR14T On Clear
Kempinski Hotel	Dubai - UAE	Leaders	NE270T Plus Grey
Kempinski Hotel & Apartments	Muscat	Airmech Oman	NE270T Plus/ Sun NN60T Grey
Kish Twin Tower	Iran	Arabian Aluminium Co. LLC	Elite Blue 30/ET On Blue
Kurla Complex	Mumbai - India	Wockhardt Ltd	Classic SS-08 On Blue
Kuwait Finance House	Kuwait	KMC Interior	Classic CR14/NE370 On Green
Kuwait Trade Center	Kuwait	Alico-Kuwait	Sun NN40 On Clear
L & T Infotech Bdlg.	Chennai - India	AGG	Classic SS-14

List of Projects



Project Name	Location	Aluminum Sub- Contractor	Glass Type
Lathifa Tower	Dubai - UAE	Alunasa-Dubai	Classic TB20 On Blue
Madina Tower-Kuwait	Kuwait	Alico-Kuwait	Classic CR14/NE370 On Clear
Madinah Road Project - Jeddah	Saudi Arabia	Alumco-Jeddah	Sun NN51 On Clear
Mahatta Towers	Mumbai - India	In House Architects	Classic SS-08
Mamsha Al Saadiyat	Abu Dhabi - UAE	White Alum/ Fibrex Alum/ PMI	Elite Blue40/ Solite Neutre
Manikchand Comm. Complex	Pune - India	Aluplex	Sun NN-40
Mankhool Tower	Dubai - UAE	Zebian Industries	ST Blue With NE370T Clear
Maple V1&3- Villas	Dubai - UAE	Lootah/ Next Level/ Emaar	Solite Zircon Crystal Grey
Marina Mall	Abu Dhabi - UAE	Gulf Glass Industries	Sun NN-40 On Arctic Blue
Marina Rise	Abu Dhabi - UAE	Al Habbar Alum	Sun NN25T On Clear
Marina Towers	Dubai - UAE	Alumco	Solite Mistral On Crystal Grey
Marina Town Quay	Beirut - Lebanon	Glassline Industries LLC	NE370 Plus On Extra Clear
Maritime City	Dubai - UAE	Alumetal	Sun NN35T Blue
Marriott Hotel – Al Forsan	Abu Dhabi - UAE	Arabian Aluminium	Sun NN60 On Grey And On Green/ Solite Neutre
Masdar Institute Accommodation	Abu Dhabi - UAE	Reem Emirates Aluminium	Solite Mistral
Masdar Neighborhood	Abu Dhabi - UAE	Folcra Beach	Solite Mistral
Max Hospital	Delhi - India	SP Fabricator	Classic SS-14
Mayan	Abu Dhabi - UAE	Alumena	Solite Mistral
Meeras HQ	Satwa	Alumetal	Solite Zircon Clear
Metropolitan Beach Club	Dubai - UAE	Technical Glass	Sun NN-41
Metropolitan Beach Club	Dubai - UAE	Interiors	Sun NN-41
Metropolitan House	Delhi - India	Kaenet Glass	Classic SS-08
Ministry Of Interiors	Doha - Qatar	Gulf Glass Industries	Classic RB-20 On Clear
Mirdif Hills	Dubai - UAE	Seema And Prime Metal	Solite Ciel On Grey Neutre On Clear
Mismak Twin Towers	Abu Dhabi - UAE	Arabian Industries	Superlite 70/40 On Clear
Mussafah Garden	Abu Dhabi - UAE	Danway Industries	Elite Sahara
Nad AL Sheba 1500 Villas	Dubai - UAE	Belgium- Reem Aluminium - Emiral	Solite Ciel/ NN50T Bronze
Marafit and Baheen Towers	Abu Dhabi - UAE	Fibrex Aluminium	Solite Neutre
Nakhali Lodges	Dubai - UAE	Alumetal	Solite Neutre On Clear

List of Projects



Project Name	Location	Aluminum Sub- Contractor	Glass Type
Nawars Towers	Muscat	Airmech Oman	ST Blue+ Ne370 Clear
Nesco	India	Sezal Glass Ltd.	Sun NN50 On Blue
New Al Zahra Hospital	Dubai - UAE	Zebian Aluminium & Glass Ind.LLC	Sun NN40 On Blue
NIDA Tower	Turkey	Erbay Aluminium	Sun NN50T On Clear
Novotel Hotel	Dubai - UAE	Arabian Aluminium Co. LLC	Classic SS20/ NN40 On Blue
NRI Hospital Jaipur (INDIA)	India	Eternal Heart Care Center & Research Inst	Classic CR14 On Bluegreen
Oasis Tower	Dubai - UAE	Al Abbar Aluminium	Classic RB-08
Obeid Tower	Abu Dhabi - UAE	White Aluminium	ST Blue/ NE370T
P.I. Raju Comm. House	Hyderabad -India	Patabi Ramarao	Classic SS-14
Palm Frond-1049 Villas	Dubai - UAE	Multiple Aluminium Fabricators	Sun NN50T Bronze/ Sun NN60T Grey
Palm Island/Leaders Alum	Saudi Arabia	Leaders Aluminium & Glass Ind. LLC	Sun NN60 On Grey
Park Plaza International	Dubai - UAE	Al Abbar Aluminium	Classic GY-14 On Clear
Park Point	Dubai Hills	Quality Aluminum	Superlite 70/40T On Crystal Grey
Park View Saadiyat	Abu Dhabi - UAE	Arabian Industries	Superlite 40/20 On Grey
PNU	Saudi Arabia	United Arab Aluminium Factory	Sun NN60 On Grey
PNU	Saudi Arabia	United Arab Aluminium Factory	Sun NN70 On Grey/Extra Clear
Port Saeed Tower	Dubai - UAE	Siraj Aluminium	ST Blue+ Ne370/ Superlite 70/40 T Clear
Prime Tower	Dubai - UAE	Bosco	Classic CR14 T Bronze
Prism Tower Dubai	Dubai - UAE	Folcra Beach Industrial Company WLL	SUPER E2 On Neutral
Project In Pakistan	Pakistan	Crystal Glass Store	Classic CR14 On Azurlite
Pullman Hotel	Dubai - UAE	Alumetal	Classic SS On Clear
Pyramid Health (Wafi-Center)	Dubai - UAE	Thani Industries	Classic DB-14
Radisson SAS Blue	Kolkata - India	Caprico International Pte. Ltd.	Classic RB20T On Clear
Rammon House	Mumbai - India	Aluplex	Classic RB-14
Rational House	Mumbai - India	Aluplex	Classic SS-14
RDK Towers	Abu Dhabi - UAE	Fibrex Aluminium	Solite Neutre
Reem Mall	Abu Dhabi - UAE	Alumetal	Solite Oceana Clear
Rex Hotel	Dubai - UAE	Arabtec	Sun NN-41
RTA Head Quarters	Dubai - UAE	Sykon	Sun NN35T Green

List of Projects



Project Name	Location	Aluminum Sub- Contractor	Glass Type
RTA New Building	Dubai - UAE	Al Fayha	Solite Zircon Clear
Rulers Bldg.	Dubai - UAE	Manar Aluminium	Classic SS-08
Rulers Office	Dubai - UAE	Corniche Aluminium	Classic RB-08
Sab Mall	Mumbai - India	Ahimayer	Classic SS-08
Safa Park	Dubai - UAE	Thani Industries	Classic RB-20
Saira Tower E-11 Markaz	Islamabad - Pakistan	Cladding Systems	Classic CR14 On Azurlite
Saleem Al Mansouri	Abu Dhabi - UAE	Alutrade	Classic SS-14
Sarah Complex	Dubai - UAE	Ahlia Aluminium	Sun NN41 On Green
Saraya Twin Towers	Abu Dhabi - UAE	Reem Emirates Aluminium	Sun NN35 On Clear
Seif Al Nahyan	Abu Dhabi - UAE	Arabian Aluminium	TS-20
Seif Development	Abu Dhabi - UAE	Arabian Aluminium	Sun NN-51/ TS 20
Serena Villas	Dubai - UAE	Windoor	Sun NN On Bronze
Seventh Heaven	Dubai - UAE	Reem Emirates Aluminium	Solite Mistral
Shams Meera Twin Tower	Abu Dhabi - UAE	Fibrex Aluminium	Solite Jar
Sharjah National Bank	Sharjah - UAE	Leaders Aluminium & Glass Ind. LLC	Classic GD05& SS08 /NE370
Sharjah University	Sharjah - UAE	Sedam Aluminium	Classic GD-05
Sheikh Zayed Memorial	Abu Dhabi - UAE	Belgium Aluminium	Solite Neutre
Sheikha Asia Project	Sharjah - UAE	Gulf Glass Industries	Classic SS-08
Shk. Faisal Al Qassimi Bldg.	Abu Dhabi - UAE	International Link	Sun NN-41
Shk. Zayed University	Abu Dhabi - UAE	Alico	Classic SS-08 On Clear
Shurooq Tower	Kuwait	Alico-Kuwait	Sun NN51 On Blue
Siemens HQ	Abu Dhabi - UAE	Belgium Aluminium	NE270T Plus On Clear
Sky Garden	Abu Dhabi - UAE	AL Jassem Aluminium	ST Blue Blue/ NE370T Plus
Sky Walk Tower	Dubai - UAE	Thomas Bennett Gulf	Sun NN-41
Sobha Sapphire	Dubai - UAE	Architectural Metal Works LLC	ESZ 47-30 On Zircon
Sofouh Tower	Dubai - UAE	Alico	Solite Zircon On Grey
Sorbonne University	Abu Dhabi - UAE	Folcra Beach Industrial Company WLL	Sun NN40 On Green
State Bank Of India Corp. Bldg.	Mumbai - India	SP Fabricator	Classic SS-14
Supreme Court	Abu Dhabi - UAE	Danway Industries	Solite Ciel On Bronze

List of Projects



Project Name	Location	Aluminum Sub- Contractor	Glass Type
Taj Apollo Bar	Mumbai - India	SP Fabricator	Sun NN-73
Tecom University	Dubai - UAE	Alico	Sun NN50 On Grey
The Bridges 6 Towers	Abu Dhabi- UAE	White Aluminium	Solite Jar
The Gate Towers	Al Alamein - Egypt	Reem Emirates Aluminium	Sun NN40T Plus On Clear
The Gate Development (Bid Pack 2)	Dubai - UAE	Alunasa W.L.L.	Sun NN60 On Clear/ Classic CR14 on Arctic Blue/NE370 Plus on Clear
Tiara United Towers	Dubai - UAE	Reem Emirates Aluminium	Classic CR14/ NE370T Plus
Tower No. 1	Dubai - UAE	Alico	Classic SS-14 On Clear
Two Towers @ Barsha	Dubai - UAE	Aligned Business Consultants	Sun NN35 On Clear
UAE University	Al Ain - UAE	Folcra Beach Industrial Company	Classic SS20 On Grey And Color Lamination
United Arab And Shipping Co.	Dubai - UAE	Thomas Bennett Gulf	IGU RB-14 On Clear/ NN- 46 On Blue
Vida Residence	Dubai - UAE	Reem Emirates Aluminium	Sun NN40T On Clear
Wafi Hotel / Alumetal	Dubai - UAE	Alumetal LLC	SUPER E2 On Neutral
Water Edge	Abu Dhabi - UAE	Reem Emirates Aluminium	Sun NN35T On Clear
West Wharf @ Business Bay	Dubai - UAE	Alumetal LLC	Classic GY08 On Ocean Blue
West Yas (1017 Villas)	Abu Dhabi - UAE	Sasco- Hawra Aluminium Emiral	Solite Zircon On Grey
Wochardt Corporate Bldg.	Mumbai - India	ECIE	Classic SS-08
Woqod Tower,Doha Qatar	Qatar	Alunasa W.L.L.	Classic CR14 On Clear/ SN35 On Blue
Yas Acers (600 Villas)	Abu Dhabi - UAE	Reem Emirates Aluminium	Solite Mistral NV
Yas Mall	Abu Dhabi - UAE	Affan Building Systems	Solite Ciel On Clear
Yas Arena	Abu Dhabi - UAE	Alumetal	Solite Mistral On Clear
Zayed Tower	Dubai - UAE	Al Abbar Aluminium	Classic RB-08 / Sun NN35 On Blue
Zayed University	Dubai - UAE	Alumetal LLC	Classic SS08 On Clear/NE370 Plus On Clear
Zayed University	Abu Dhabi - UAE	Folcra Beach Industrial Company WLL	Sun NN40 On Blue Green

Pictures of Projects

DUBAI INVESTMENT BUILDING
DUBAI

EMICOOL SUN NN35 ON ARCTIC
BLUE / GY ON CLEAR



SIEMENS HEAD QUARTERS
ABU DHABI - UAE

EMICOOL PLUS NE270T



KALPATARU SQUARE
INDIA

EMICOOL TB20 ON AZURLITE



SKY VIEW RESIDENCE
DUBAI

ARMAX / EMICOOL SUN NN40T



FIVE JUMEIRAH VILLAGE HOTEL
UAE

EMICOOL ELITE BLUE 40



FLAME TOWERS,
AZERBAIJAN

EMICOOL SUN NN35 ON CLEAR



HEYDAR ALIYEV CULTURAL CENTER,
AZERBAIJAN

EMICOOL SUN NN40T ON LOW IRON



EMIRATES TOWERS,
UAE

EMICOOL SUN NN48, NN51 & SS08 ON CLEAR,
NN41 ON PINK, NN51 ON BLUE GREEN



KEMPINSKI HOTEL,
OMAN

EMICOOL PLUS NE270T ON CLEAR /
EMICOOL SUN NN60 ON GREY



DUBAI INTERNATIONAL AIRPORT TERMINAL 3,
UAE

EMICOOL PLUS NE270 ON AZURLITE



JEWEL OF THE CREEK,
UAE

EMICOOL ST BLUE



HIDD AL SADIYAT 488 VILLAS,
UAE

EMICOOL SOLITE JAR



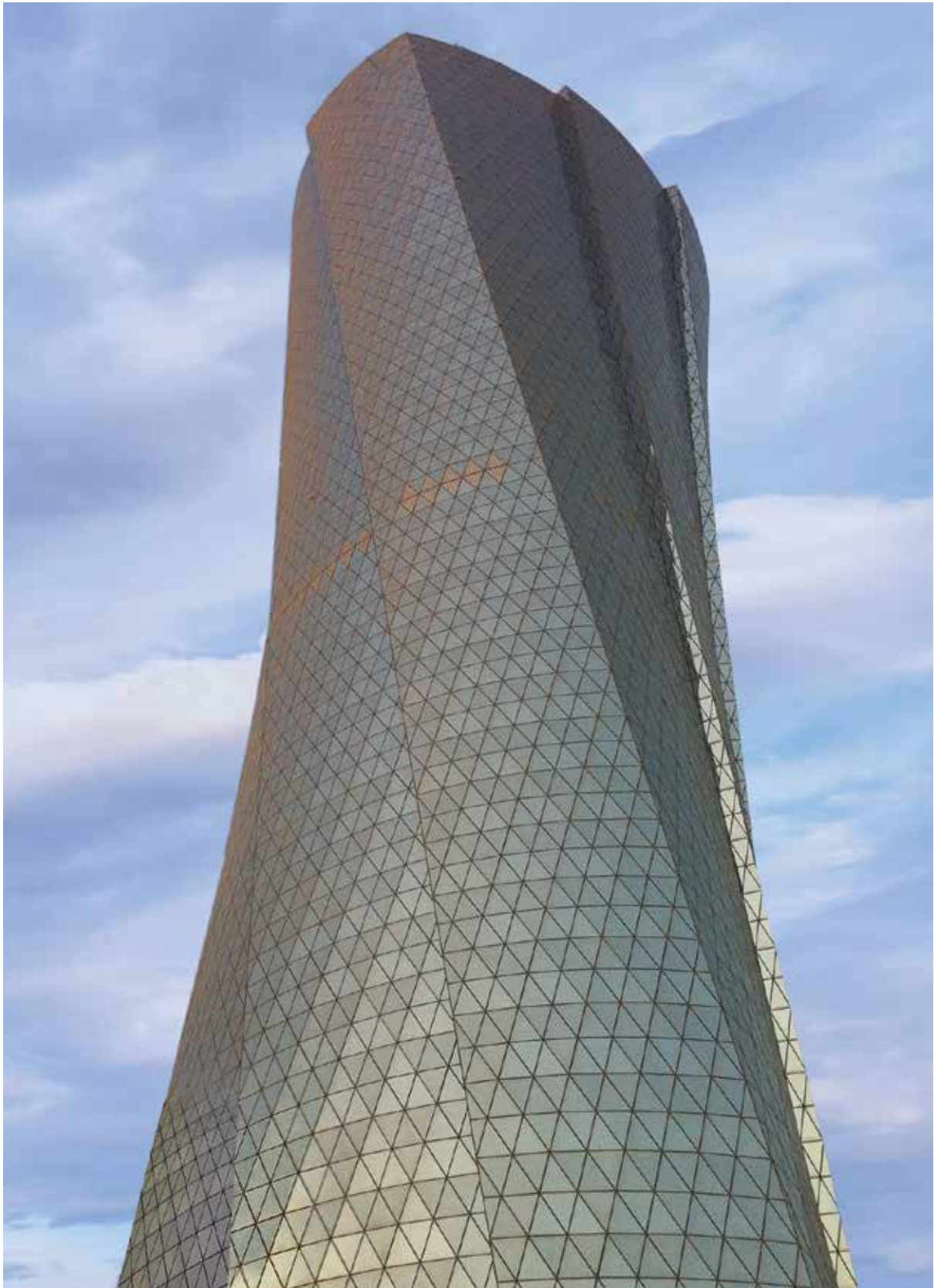
SERENIA RESIDENCES,
UAE

EMICOOL SOLITE MISTRAL



PLATINUM TOWER,
QATAR

EMICOOL CLASSIC CR14 ON CLEAR /
EMICOOL PLUS NE 370 ON CLEAR



DUSIT THANI,
UAE

EMICOOL CLASSIC SS-08 ON CLEAR



AKOYA,
UAE

EMICOOL SOLITE JAR



DUBAI DESIGN DISTRICT,
UAE

EMICOOL ELITE BLUE 40 T



PARK VIEW,
UAE

EMICOOL SUPERLITE 40/20 ON GREY



KING ABDUL AZIZ INTERNATIONAL AIRPORT,
KSA

EMICOOL SOLITE JAR



CITY CENTER TOWERS,
BAHRAIN

EMICOOL ELITE BLUE 30



CREDIT LIBNAIS HQ,
LEBANON

EMICOOL SUN NN50T ON GREEN



List of Processors

List of Processors




Al Jaber Glass Processing Plant	Abu Dhabi, UAE
Al Wakeel Glass (KSA)	Damman, KSA
Alumco LLC	Dubai, UAE
Alutec WLL	Doha, Qatar
Belgium Aluminium & Glass	Al Ain, UAE
Bosco Aluminium & Glass Company LLC- Glass Division	Ras Al Khaimah, UAE
Burhani Glass Factory LLC	Dubai, UAE
Camyapi	Istanbul, Turkey
Cladtech International	Ras Al Khaimah, UAE
Danway Industries LLC	Abu Dhabi, UAE
FA Glass Industries	Mumbai, India
FG Glass Industries	Mumbai, India
Future Architectural Glass	Ras Al Khaimah, UAE
Galaxy Glass Works	Chennai, India
Glass Specialized Industries Co. LTD	Damman, KSA
Glass Tech	Abu Dhabi, UAE
Glass Tech	Manama, Bahrain
Glasshouse Company Ltd.	Riyadh, KSA
Glasstech Industries	Mumbai, India
Gulf Glass Industries	Sharjah, UAE
Ittihad Insulating Glass	Amman, Jordan
Madar Glass LLC	Syria
Multiforms Architectural-Facade Specialist	Dubai, UAE
Raoom Glass Factory	Al-Qaseem, KSA
Reem Emirates Glass	Abu Dhabi, UAE
Regional Glass Factory	Jizan, KSA
Saber Trading S. Est-Saber Glass	Damman, KSA
Salum Co	Riyadh, KSA
Select Glass Industries LLC	Ras Al Khaimah, UAE
Technical Glass & Aluminium Co.	Sharjah, UAE

List of Processors



Technical Glass & Aluminium Company LLC	Dubai, UAE
The First for Glass Industries	Amman, Jordan
Thomas Bennet Gulf LLC	Dubai, UAE
United Arab Aluminium Company	Jeddah, KSA
White Aluminium Enterprises-Glass Processing Division	Abu Dhabi, UAE
Zamil Glass	Damman, KSA
Al Andalus Glass Factory	Riyadh, KSA
Al Alamiyah	Kuwait
National Glass Industries	Dubai, UAE

Quality Manual

 الإمارات للزجاج Emirates Glass	QUALITY POLICY	Doc - EG - QM
		Rev : 7
		Date: 20/09/2017

Emirates Glass aims to be dynamic, pro-active, market driven, provider of quality glass products and be judged on their excellence by customers, shareholders and employees alike.


It is the Company's policy to:

- Supply glass of high quality standards.
- Offer technical support to customers for appropriate selection of products.
- Deliver glass in timely manner and honor our commitments.
- Establish and maintain price at levels that are consistent with the specifications.
- Strive for continuous improvement in operational areas and customer's satisfaction.
- Continue to develop new products to meet the environmental requirements and spread awareness for the same.
- Comply with all regulatory and statutory requirements.


Rizwanulla Khar
Executive President,

Emirates Glass LLC

Date: 20/09/2017

 الإمارات للزجاج Emirates Glass	HSE POLICY	Doc – EG - QM
		Rev : 1
		Date: 20/09/2017

EGL is committed to manage its activities of glass processing in a way that seeks to safeguard the interests and concerns of all shareholders, customers, employees, business partners and the general public.

EGL regularly assesses and continually improves its operating systems and understanding of company's product and processes, with respect to:

- Their impact on health and safety of company's employees, customers and the general public
- Their impact on the environment

The management of the company will set objectives and targets that will be regularly reviewed and revised. The aim is to achieve standards of health, safety and environment which exceed those necessary to meet the requirements of legislation.

The management of the company ensures that sufficient resources are provided to enable compliance with this policy.

Every employee is expected to acquaint him/herself with the company's system on Health, Safety and Environment as detailed in the Safety, Health & Environment manual and procedures which are in place to enable the aims of the policy to be carried out.

The responsibility for the management of health, safety and environment lies with all VPs, Managers and Supervisors. High standards of safety and environmental system are deemed to be of equal importance with quality, production and achievement of commercial targets.

This statement is a declaration of the management's intent to establish a safe and healthy working environment for all the company's undertakings.


Rizwanulla Khan
 Executive President,

Emirates Glass LLC

Date: 20/09/2017



Technical Department

Glass Processing

Method Statements

Quality Standards and Certificates

Table of Contents

Raw Materials	3
Storage.....	3
Shop Drawings.....	3
Planning	3
Production.....	3
Glass Cutting	3
Polishing.....	4
Manual Drilling.....	4
CNC Drilling and Notching.....	4
Arrising.....	4
Screen Printing	4
Tempering and Heat Strengthening.....	6
Lamination	6
Spacer Bar Assembly.....	6
IGU Assembly	7
Dispatch	7
Magnetron Sputtered Vacuum Deposition Coating Process (MSVD)..8 Appendix: 1 - Standards and Certificates:	

Method Statements

Raw Materials

All materials are procured according to the specifications and contract requirements using the Emiproduct software system as per our published ISO 9001:2008 system

Architectural Soda Lime Silica Glass produced by the float glass method is Asbestos and Chlorine free.

Storage

All incoming materials are inspected and checked against the delivery notes and packing lists. Any nonconforming materials are returned to the supplier and identified as such on the list. Acceptable materials are entered on the inventory system by the storekeeper.

Shop Drawings

Preparations of shop drawings are coordinated with the contract drawings, specifications, bills of quantities and actual site measurements. All shop drawings are prepared using Auto Cad and either transferred directly to our CNC machinery or exported into our bespoke production software.

Planning

The Production Planner in consultation with the Production Manager, Purchasing Manager, and Storekeeper ensures that the timely release of orders for production will meet with the clients expected delivery dates, and the availability of materials on hand.

Production

Each project is assigned a unique reference number and then subsequently divided into separate smaller "orders," and entered into our bespoke production software, each with a unique order number and reference to correspond with the planned delivery schedule and production requirements. The orders are then allocated a unique production batch number and optimized for best use of the glass.

Production identification labels, finished goods labels, work orders and glass requisition forms are then issued to the shop floor for manufacture in accordance with the production schedule, and the cutting information is transmitted electronically to the glass cutting table and spacer bar saw.

Glass Cutting

All glass required for a production batch is requested from the stores using the requisition form, which details glass type, thickness size and quantity forecasted to use. The storekeeper issues the materials from stock using the EGL inventory software and records the glass manufacturers' production information for audit purposes.

The individual pieces of glass are cut, labeled with a unique production label, scanned by the barcode reader and racked ready for the next process as detailed in the works order.

All applicable quality checks are performed as detailed in our inspection and test plan.

Polishing

Glass which requires polishing is segregated at the cutting department and processed through the relevant machine dependent upon details specified on the works order. The applicable quality checks are performed and the glass is then released to the next relevant process.

Manual Drilling

Holes are marked out and drilled in accordance with the works order, and relevant quality checks are performed and the glass is then released to the next relevant process.

CNC Drilling and Notching

CNC design work is transmitted from the office to the CNC machine operators for drilling and notching. All relevant quality checks are performed and the glass is then released to the next relevant process.

Arrising

All glass which does not have polished edges is arrised, washed and visual quality inspected as per our QA/QC standards process ready for the next process.

Screen Printing

Paint is mixed and recorded as per the RAL colour specified in the works order. The silk screen is positioned and checked on the glass as per the works order requirements. Each glass is then printed and transported through the dryer, and stored ready for tempering or heat strengthening.

Screen Printing - Tempering Oven Ceramic Frit Method and Uses

Emirates Glass LLC:

Our company manufactures silk-screened ceramic frit glasses for architectural and commercial use. The process involves screen printing ceramic frit paint onto the glass and fusing it onto the surface during the toughening or heat strengthening process at approx. 700 degrees Celsius. The result is a tough decorative glass.

- Full Ceramic frit is a roller coated glass with a solid colour.
- Design Ceramic frit is screen printed glass with a pattern or design.

This decorative process allows the designer flexibility in selecting cladding materials where colour and pattern design are important for visual impact. It also offers creative solutions for controlling solar heat gain and glare and providing privacy.

Roller Coated Glass

Roller coated glass is toughened or heat strengthened glass that has one side coated with permanently fused ceramic frit paint. It is normally supplied as toughened safety glass but can be heat-strengthened glass. It can also be supplied as toughened or heat strengthened custom laminated glass. The ceramic frit coating can be applied to extra clear, clear float and tinted float glasses in thicknesses from 4mm to 19mm. The coating can be a total coverage coating, a partial coating, or in the form of edge banding.

Ceramic Frit Glass Method

Ceramic frit is applied to the glass through a fine mesh screen with glass enamel before the glass is tempered or heat strengthened. On tempering or heat strengthening, the glass enamel fuses into the glass surface and becomes a permanent coating which cannot be damaged or removed by cleaning or scrubbing etc.

Silk-screened glass can be specified for both exterior and interior applications. When used on building exteriors it is recommended for the painted surface to be protected from direct contact with the environment and is normally found in an insulating glass unit.

Combining silk-screened glass with clear, tinted, Low-E, or reflective glass, can control light transmittance; reduce solar heat gain and its aesthetic and performance characteristics are enhanced.

Ceramic Frit Process

Silk-screening involves washing the annealed glass and then the ceramic frit paint is applied to the interior (non-weather) side of the glass. Frit consists of tiny glass particles, pigments and various chemicals for the curing. Ceramic frit is fired within a tempering furnace at temperatures of approximately 700 degrees Celsius to create a permanent coating. The glass is always either heat strengthened or fully tempered to prevent glass breakage due to thermal stresses.

Surface Positioning of Ceramic Frit

The frit can be positioned in Face 1, 2, 3 or 4 for optimum solar performance. The results are an increase in solar absorption on the interior glass ply and a lower shading coefficient. Silk-screening on these two surfaces becomes more apparent from the interior during nighttime conditions, which complements indirect interior lighting. Ceramic frit can be combined with clear or tinted glass substrates, as well as with high-performance coatings to reduce glare and decrease solar transmission.

Characteristics of Ceramic Printed Glass

The coating is not affected by moisture, oil, soaps, chemicals or detergents and retains its original appearance throughout the life of the glass.

Certain areas of application make it important to mask a part or whole of glass for privacy or hiding the background or enhancing the look of a product or for purely aesthetic reasons.

Light frit colors and certain pattern designs can cause enhanced brightness when viewed from indoors under certain daylight and background sky conditions, while dark frit colors will tend to reduce glare.

Applications of Ceramic Printed Glass

Applications include transparent and translucent silk-screened glass for interior applications, including glass doors, partitions, handrails, glass ceilings, bathrooms, elevator walls and shower enclosures.

Ceramic frit glass used in curtain walls; point fixed or bolted glazing systems, shower installations, glass doors and partitions. The size, density and color would determine the opacity and shading whereas the variety of dots, squares, checks and patterns will give many design combinations to achieve the desired effect.

Float Glass Tempering, Heat Soaking and Heat Strengthening

Glass is selected for type and thickness and the corresponding recipe selected on the furnace. Test samples are made for fragmentation and mechanical testing as detailed in our quality and standards procedure.

The batch of glass is then tempered or heat strengthened as per the requirements of the works order. Each production label is re-applied to the correct glass and is checked for traceability.

If the glass is a monolithic finished product, the finished goods label is applied and the glass loaded onto appropriate dispatch frames. A packing list is produced from within our bespoke software and the glass is now ready for dispatch.

If the glass is to be made into a sealed unit the panes are racked in the sequence generated by the bespoke software and prepared for the double glazing.

If any of the fully tempered glass is to be Heat Soak Tested it is loaded onto appropriate frames and dispatched to our heat soak oven area where the glass will be heat soak tested to EN 14179.

On passing the heat soak test cycle the glass is then returned to the next appropriate stage of processing. The labels of any glass panels which break during the heat soak test are returned to the production system for appropriate action and replacement.

If any of the glass is to be laminated it is loaded onto appropriate frames and dispatched to our supplier of lamination who will laminate the glass in accordance with EN 14449-2 and then deliver the laminated product back to us for our quality inspection and despatch.

Lamination

Our laminator of choice is our sister company, Lumi Glass Industries LLC. This company is CE Marked to EN 14449-2.

Standard lamination process is one where two or more glass panels are bonded with one or more layers of plasticized Polyvinyl Butyl (PVB) using heat & pressure.

The glass panels are first washed, visually inspected for any defects, then assembled with layer/s of PVB between them & sent through set of rollers with heat which bonds glass to the PVB.

The glass units are sent to controlled chamber called Autoclave where the glass is allowed to remain for 3 - 5 hours in controlled temperature & pressure to remove all the air between the glass panes.

Spacer Bar Assembly

Spacer bars are bent to the required dimensions and shape, and then 1 long and 1 short side is injected with desiccant. The sides of the spacer bar now have butyl applied and the bar is now hung in the correct sequence to correspond with the glass.

IGU Assembly with ASTM E2190 - IGMA/IGCC Certification

The first leaf of the IGU is washed, dried and visually inspected and the finished goods label applied. The leaf is then sent through to the assembly station where it is automatically lifted out by the assembly station to allow the second leaf to be positioned.

The second leaf of the IGU is washed, dried and visually inspected and the relevant spacer bar is applied. This leaf now passes into the assembly station and the first leaf is now pressed against the spacer bar and the second leaf. The IGU now passes to the automatic sealing station where the sealant is injected into the cavity.

Once the unit is sealed by the automatic sealing machine the label is scanned and the glass is loaded onto appropriate handling frames and a packing list produced ready for dispatch.

Dispatch

Once the appropriate frame is full the packing list is automatically prepared. One copy is attached to the stack of finished goods, second copy is used to produce the delivery note. The glass is packed and loaded onto the truck ready for delivery.

The prepared delivery note and gate pass are checked by security. The glass is then delivered to the client. Delivery note signed by the client is returned to the office for invoicing purposes.

EMIRATES GLASS LLC

MSVD COATING PROCESS

MSVD Coated Glass Method Statement

Background - Magnetron Sputtered Vacuum Deposition Coating Process

Glass substrates are used in a variety of applications including architectural applications, automotive applications, consumer appliances, etc. Oftentimes, the glass is coated with a functional coating(s) to provide the required properties. Examples of functional coatings include solar control coatings, conductive coatings, photocatalytic coatings, low emissivity ' coatings, etc. Today, scientists and engineers are devising increasingly complex functional coatings. More specifically, functional coatings are being designed with more discrete coating layers.

Generally, the more discrete layers of coating in a multi-layer coating stack, the easier it is to control properties of the coated substrate such as color and solar properties, e.g., emissivity. Several techniques, such as chemical vapor deposition ("CVD"), spray pyrolysis, and magnetron sputtered vacuum deposition ("MSVD") are known in the art for applying functional coatings on a substrate. MSVD processes are best suited for complex coatings containing one or more coating layers because they allow for a wider selection of coating materials to be deposited at thinner thicknesses on a broader variety of substrates.

Coating Preparation and Process

Clear and Body Tinted Float Glass is delivered to the coating plant by ordered batch to suit the client requirements. The glass is taken into the preparation area and logged into the computerized production system for coating schedule processing. During the unloading process the glass will be inspected for defects and aging.

Glass Type

The glass can be cut to size or stock sheet depending on the nature of the coating process and customer requirements. Post Temperable coatings can be applied to standard stock sheet sizes which can then be transported to glass processing operations.

Process Preparation

Glass selected for coating in the scheduled production run is inspected for any flaws or damage. On passing this first inspection the glass is washed by automatic and computer controlled machinery before passing into the MSVD coating chambers.

MSVD Processes

MSVD processes are performed in coaters having one or more coating zones. A typical MSVD coater has between four and twenty zones. Each zone includes one or more targets, usually three, for depositing a specific type of material on a substrate. Each target is placed in a bay which has its own gas feeds by which gas comes into the zone. Although gas comes into a zone in different places, all of the gas that comes into the zone leaves at a certain place in the zone. Each zone in a coater is run, i.e. operated to deposit a coating layer, in one of three modes- metal mode, transition mode, or oxide/nitrite mode. Generally speaking, the amount of reactive gas, e.g. a gas like Oxygen or nitrogen that is capable of reacting with a target in the zone, determines the mode.

Metal Mode

In metal mode, the gaseous atmosphere in the zone consists of only non- reactive gas, e.g. argon, and the zone is run to deposit a layer of metal on a substrate. Of the three modes, metal mode generally has the fastest deposition rate, with the exception of a few target materials such as tungsten.

Transition Mode

In transition mode, the gaseous atmosphere in the zone consists of both non- reactive gas and a reactive gas, and the zone is run to deposit a layer of sub - oxide or sub - nitrite on the substrate. The concentration of the reactive gas is constantly monitored and adjusted to ensure the oxide/nitrite layer is being deposited at the maximum rate. The deposition rate in transition mode is slower than the deposition rate of metal mode but faster than the deposition rate of oxide mode.

Oxide Mode

In oxide mode, the gaseous atmosphere in the zone consists of both non-reactive gas and reactive gas, and the zone is run to deposit a layer of oxide/nitrite on the substrate. Of the three modes, oxide/nitrite mode has the slowest deposition rate.

Deposition Rate

The deposition rate in metal mode can be up to ten times faster than the deposition rate in oxide/nitrite mode. Conventionally, each bay in a single zone in an MSVD coater is run in the same mode; either metal mode, transition mode, or oxide/nitrite mode. If different bays in a zone were run in different modes, oxide mode and metal mode, for example, reactive gas entering the bay being run in oxide mode could leak over (also referred to as "bleed through") into the bay being run in metal mode and negatively impact the deposition process. The desired metal layer would not be deposited and/or the speed of the deposition would be reduced.

Coating Zones

Because a single zone is always run in one mode, the types of coating compositions that can be deposited and the efficiency at which they can be deposited (the faster the rate of deposition, the faster the rate of production) are limited by the total number of zones in the coater. For example, a coating that has three silver layers sandwiched by four zinc oxide layers cannot be deposited via a continuous process in a coater having less than seven zones. Four zones are required to run in either oxide mode or transition mode to deposit the layers of zinc oxide and three zones are required to run in metal mode to deposit the silver layers. Although it may be possible to produce the described coating in a coater have less than seven zones by running the substrate through the coater more than once, such is undesirable for several reasons, chief among them, efficiency.

Coating Zones - Expansion

Coaters can be expanded to include more coating zones. Some multi- zone coaters are designed to accommodate an expansion to include more zones, but others are not. Regardless, it is expensive to add more zones to an existing coater. It would be extremely beneficial to have a method for coating substrates in a MSVD multi-zone coater that reduces the total number of zones required to deposit a coating. The present invention provides a method for coating a substrate that includes running a single zone of a MSVD multi- zone coater in at least two different modes, thereby reducing the total number of zones required to apply a given coating.

Inspection

After exiting the vacuum/coating chamber the glass is inspected by Zeiss Photo spectrometers processes and finally by trained human operators. These checks ensure even application of the coating materials and colour consistency. The used color determining system is CIE Lab which will be used to determine color for Film and Glass side Reflection and in Transmission.

Glass samples are randomly taken out from the process and will be used for durability tests such as:

Tape test

Washing test

Aging test

Abrasive test

Test Glasses are frequently sent to EGL tempering lines to inspect and test the temperability of the coated glass during the production.

Packing

After exiting the inspection chamber and probes the glass is transported by conveyor to the automatic off-load area. Computer controlled robotic arms remove the coated glass from the conveyor and stack on specialist handling equipment for packing and surface protection.

Depend on the coating the glass will be packed with:

Aluminum foil

Water absorbent chains

Perimeter tape

Wooden end caps

Delivery

The packed coated glass is logged in the system against the initiating client order and notified to transport management and logistics. Vehicles are packed by specialized loading equipment at the dispatch end of the coater and delivery paperwork is produced by the administration department and computer function.

The finished product is now transported to the customers desired delivery location and signed for by the receiving goods in operative.

Acknowledgement delivery records are returned to the coating plant administrator and logged into the system as delivered and order complete. This process generates the required sign off from production to the administration and finance section which will then raise the required account handling and invoice scheduling.

Operating Procedure and Standards

All of the above MSVD coating processes are carried out to our certificated ISO 9001:2008 factory procedures and to the requirement of ASTM C1376 - Standard Specification for Pyrolytic and Vacuum Deposition Coatings on Float Glass.

Appendix 1:

Emirates Glass LLC

Quality Standards and Certificates

Emirates Glass LLC operations are governed and certificated by ISO 9001: 2015

The company operates with (certificated granted) and to (operational standard) the standards and regulatory requirements below:

International ISO Type	ISO	-
International Standard	ISO 9001: 2015	-
International Standard	ISO 14001: 2015	
International Standard	ISO 18001: 2007	
Process Type	ASTM Standards	CEN Standards
Float Glass Sourcing	To ASTM C1036	With EN 572
Insulated Glass Unit Manufacture	With ASTM E2190	To EN 1279
Heat Treated Glass Manufacture	To ASTM C1048	To EN 12150
Laminated Glass Manufacture	To ASTM C1172	With EN 14449
Ceramic Frit Manufacture	To ASTM C1048	-
MSVD Coated Glass	To ASTM C1376	-
Safety Glass	With ANSI Z 97.1	With EN 12600

Certificates



UAE Business
Awards



Architectural Glass
Processors of the Year
Middle East

Manufacturer's License

ترخيص مصنع

رقم التسجيل Registration Number	301205	رقم الترخيص License Number	الإمارات	الجنسية Nationality	الإمارات	رقم الترخيص License Number	الإمارات للزجاج (ش. ذ. م.)	اسم المصنع Name of Factory	الإمارات للزجاج (ش. ذ. م.)	رقم الترخيص License Number	LMTNA0000207178-2021
ص.ب. P.O. Box	29769	تاريخ الانتهاء License Expired	الإمارات	الجنسية Nationality	دبي للاستثمار (ش.م.ع)	رقم الفاكس Fax Number	زجاج ذ م	اسم صاحب الترخيص Owner of the License	زجاج ذ م	عدد الصفحات Number of Pages	1
عدد المعدات والأجهزة المعتمدة Total number of Products approved	1	تاريخ الإصدار License Issued	مكتب ملك عقارات حكومة دبي - القوز	رقم الهاتف Office Phone Number	971-4-3471440	رقم الهاتف Office Phone Number	971-4-3471515	عنوان الشركة Company Address		تأسست بتاريخ Company Registered Date	1996/08/28 م
الموقع / البريد الإلكتروني Email of the Company	JJU@EMIRATESGLASS.COM	تاريخ الإصدار License Issued		الموقع / البريد الإلكتروني Email of the Company		تاريخ الإصدار License Issued	2024/06/28 م	الموقع / البريد الإلكتروني Email of the Company		تاريخ الإصدار License Issued	2025/04/18 م

تم إصدار الترخيص استناداً إلى القرار الوزاري رقم (213) لسنة 2017، في شأن تنظيم خدمات الدفاع المدني
The license was issued pursuant to Ministerial Decree No. (213) for the year 2017 pertaining the regulation of civil defense services



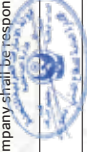
الإمارات للزجاج (ش. ذ. م.)	اسم المصنع Name of Factory	رقم الترخيص License Number
		LMTNA0000207178-2021
		رقم الصفحة Page Number
		1

اسم المختبر Name of Certification Body	رقم شهادة السلامة Certification Number	الاسم التجاري Brand Name	اسم المعدة Type of Products	م
SAFETY GLAZING CERTIFICATION	LCA00001617 80-2019	MAGNUM PRO GLASTON JUMBO SERIES & GLASTON PRO L	FULL TEMPRETED SAFETY GLASS & LAMINATION SAFETY GLASS Product Name: Emirates Glass – Safety Glazing Product Type (1): Fully Tempered Safety Glass – 4, 6, 8, 10 & 12 mm thickness, Size Classification: Unlimited; Impact Classification: Class A Product Type (2): Laminated Safety Glass – 13.52, 17.52, 21.52 & 25.52mm thickness, Size Classification: Unlimited; Impact Classification: Class A Compliance: ANSI Z97.1-2015 In compliance with: UAE Fire and Life Safety Code of Practice 2018 Chapter 1 – Section 5 Glazing System -Section 7.1.37. Safety Glazing End-use: As per Table 1.18 Glazing Test Requirements – Test B, for Non-loadbearing curtainwall with glazing, non-loadbearing walls, Ceiling, Loadbearing elements (floor and Roof) and Doors and vision panels	1

ملاحظة: 1. يجب إبلاغ الإدارة العامة للدفاع المدني - دبي في حالة تغيير أو تعديل في البيانات المتعلقة في الترخيص الصادر من قبل الإدارة.
2. يجب على الشركة المعتمدة لدى إدارة الدفاع المدني - دبي إبراز الترخيص السابق بالتفصيل الخاص بالمعدات المعتمدة والصادر من قبل الإدارة للمتعامل، وعلى الشركة تحمل المسؤولية عند انتهاء الترخيص أو إغلاق الشركة.

Note: 1. Any changes to the product / manufacturer / location or specification the Dubai Civil Defense - GHQ must be notified
2. Manufacturers shall produce a valid approval of products whenever requested. Company shall be responsible if license expires or company closed.

DCDDubai DCDDubai DCD997 www.dcd.gov.ae
رؤسفة أن تكون دولة الإمارات العربية المتحدة من أفضل دول العالم في تحقيق الأمن والسلامة.



يعتمد / عن مدير الإدارة العامة للدفاع المدني دبي
Signature of Directorate of Civil Defense - Dubai

الطوارئ
EMERGENCY
997

رقم الترخيص License Number	LMTNA0000207178-2021
عدد التراخيص Number of Licenses	2 - 2
اسم المصنع Name of Factory	الإمارات للزجاج (ش. ذ. م.)

رقم الترخيص License Number	اسم المصنع Name of Factory	رقم شهادة السلامة Certification Number	اسم المصدر للشهادة Name of Certification Body	بلد الصنع Place of origin	الاسم التجاري Brand Name	اسم المعدة Type of Products	م
						Fully Tempered Safety Glass & Lamination Safety Glass	
Type of Products							
Fully Tempered Safety Glass & Lamination Safety Glass							
Tempering, Lamination & IGU							
2. Laminated Safety Glass							
Sr no	Glass thickness	Test result	Size classification (Clause 4.3 as per ANSI Z97.1-2015)	Impact Classification (Clause 4.3 as per ANSI Z97.1-2015)			
1	13.52mm (6mm HS + 1.52 PVB + 6mm HS)	Pass	Unlimited Size (U)	Drop height - Class A			
2	17.52mm (8mm HS + 1.52mm PVB interlayer + 8mm HS)	Pass	Unlimited Size (U)	Drop height - Class A			
3	21.52mm (10mm FT + 1.52mm SGP interlayer + 10mm FT)	Pass	Unlimited Size (U)	Drop height - Class A			
4	25.52mm (12mm FT + 1.52mm SGP interlayer + 12mm FT)	Pass	Unlimited Size (U)	Drop height - Class A			

ملاحظة:
1. يجب إبلاغ الإدارة العامة للدفاع المدني - دبي في حالة تغيير أو تعديل في البيانات المتعلقة في الترخيص الصادر من قبل الإدارة.
2. يجب على الشركة المعتمدة لدى إدارة الدفاع المدني - دبي إبراز الترخيص الساري المفعول الخاص بالمعدات المعتمدة والصادر من قبل الإدارة للمتعامل، وعلى الشركة تحمل المسؤولية عند انتهاء الترخيص أو انقضاء الشركة.

Note: 2. Any changes to the product / manufacturer / location or specification of the Dubai Civil Defense - GHQ must be notified.
2. Manufacturers shall produce a valid approval of products when requested. Company shall be responsible if license expires or company closed.



CERTIFICATE

This is to certify that the Integrated Management System of

EMIRATES GLASS L.L.C.

Al Quoz Industrial Area-4, PO BOX. 29769 Dubai,
UNITED ARAB EMIRATES

has been assessed and found to be in accordance
with the requirements of

ISO 9001:2015, ISO 45001:2018, ISO 14001:2015

in respect of processing and supply
of Architectural High Performance Coated,
Laminated and insulated Glass units

No: UZ.INT.04.0007.0005
of 13th September, 2024



This certificate is valid until **12th September, 2027**

Head of MS CB
Russkiy Registr - Srednaya Azia Ltd.

The certificate covers only those sites of the company which are stated in this certificate. This certificate becomes invalid if conditions of certification are not fulfilled (<https://rruz.uz/318.004.00-105.pdf>)



ACKNOWLEDGEMENT OF CERTIFICATION

THIS IS TO ACKNOWLEDGE THAT AS OF THIS DATE

Emirates Glass L.L.C.

Dubai, United Arab Emirates

IS A CURRENT LICENSEE AND HAS MET ALL GUIDELINES AND REQUIREMENTS FOR THE IGCC®/IGMA® CERTIFICATION PROGRAM AND AS SUCH IS ELIGIBLE TO LABEL THE BELOW INDICATED PRODUCT(S) AS IGCC®/IGMA® CERTIFIED. THE FOLLOWING ARE IN COMPLIANCE WITH ASTM E2190 FOR SEAL DURABILITY OF INSULATING GLASS UNITS AND PASSING GAS CONTENT INITIAL AND AFTER WEATHERING (GCIA) CERTIFICATION REQUIREMENTS AS INDICATED.

<u>CERT #</u>	<u>GLASS</u>	<u>SPACER</u>	<u>FRAME CONST.</u>	<u>DESICCANT</u>	<u>SEALANT</u>	<u>GCIA</u>	<u>IC</u>
2334	U/C2	MA	BC4/ALLC	LF	PIB/S2	No	
5547	U/C2	MA	BC4/ALLC	LF	PIB/S2	Yes	

THIS IGCC®/IGMA® PROGRAM CERTIFICATION IS CURRENT AND IN FULL EFFECT AS OF THIS ISSUE DATE. CERTIFICATION IN THE IGCC®/IGMA® PROGRAM IS SUBJECT TO SEMI-ANNUAL RENEWAL. PLEASE CHECK THE CURRENT CERTIFIED PRODUCTS DIRECTORY OR THIS OFFICE FOR MOST CURRENT INFORMATION.

Wednesday, January 3, 2024

February 1, 2024 - January 31, 2025

DATE OF ISSUE

CERTIFICATION PERIOD

ADMINISTRATIVE MANAGER

CIVIL SUPPLIER REGISTRATION CERTIFICATE



Issue Date:

28 March 2024

We hereby register the Supplier:

Emirates Glass LLC

ADCE Vendor Code:

v0003289

Please refer Schedule A for Materials

Remarks:

Theodore Hakim

Rabeh Jadou Helal

Registration Review Committee Signature 1

Registration Review Committee Signature 2



Disclaimer:

- 1) It is the role of the Consultant to select materials from the registered list.
- 2) The specifications of the selected materials are the sole responsibility of the Consultant.
- 3) Nothing in this Registration Certificate absolves the Supplier or the Consultant from any liability towards any party. ADCE does not make any warranty or representation as to the quality, fitness for purpose, or suitability of the Materials and shall not be liable to any party for any loss including but not limited to the financial condition of the Supplier, the performance and observance by the Supplier or the Consultant of any contract or arrangement, or the accuracy of any statements made by the Supplier or the Consultant. Any representations or warranties implied by law are excluded. The issuing of this certificate does not confer any authority upon the Supplier or the Consultant.
- 4) This certificate is valid for one year from issue date.

CIVIL SUPPLIER REGISTRATION CERTIFICATE



ADCE Vendor Code:

v0003289

Schedule A

GLASS (Coated, Tinted, Reflective) - EMICOOL - UAE





رخصة صناعية Industrial License

تفاصيل الرخصة / License Details

License No.	301205	رقم الرخصة
Company Name	EMIRATES GLASS (L.L.C.)	اسم الشركة
Business Name	EMIRATES GLASS (L.L.C.)	الإسم التجاري
Legal Type	Limited Liability Company(LLC)	الشكل القانوني
Expiry Date	27/08/2025	تاريخ الإصدار
D&B D-U-N-S ® N	561427576	رقم الرخصة الام
Register No.	47454	عضوية الغرفة
	301205	رقم الرخصة الام
	40175	عضوية الغرفة

الاطراف / License Members

Share / الحصص	Role / الصفة	Nationality / الجنسية	Name / الإسم	No./رقم الشخص
	Manager / مدير	United Arab Emirates / الامارات	السيد عبدالعزيز بن يعقوب يوسف المركال	326638

نشاطات الرخصة التجارية / License Activities

Fire Resistant Doors Manufacturing	صناعة الأبواب المقاومة للحريق
Metal Doors & Windows Manufacturing	صناعة الابواب والنوافذ المعدنية
Toughened or Laminated Flat Glass Manufacturing	صناعة الزجاج المسطح المقسى او المنضد
Glass Mirrors Manufacturing	صناعة المرايا الزجاجية
Fire Resistant & Retardant Materials Manufacturing	صناعة المواد المقاومة والممانعة لإنتشار الحريق
Reflective, Enamelled & Insulant Glass Production	انتاج الزجاج العاكس المطلي والعازل
Safety Glass Manufacturing	صناعة زجاج الامان
Fire & Smoke Resistant Doors, Windows, Walls & Partitions Installation	تركيب الأبواب والنوافذ والجدران والقواطع المقاومة للحريق والدخان

العنوان / Address

Phone No	971-4-3471515	تليفون	P.O. Box	29769	صندوق بريد
Fax No	971-4-3471440	فاكس	Parcel ID	369-1075	رقم القطعة
Mobile No	971-55-2244610	هاتف متحرك	البريد الإلكتروني / Email	asalhuwaidi@dubaiinvestments.com	

مكتب ملك عقارات حكومة دبي - القوز

Print Date	23/08/2024	8:43	تاريخ الطباعة	Receipt No.	15959323	رقم الإيصال
------------	------------	------	---------------	-------------	----------	-------------



يمكنك الآن تجديد رخصتك التجارية من خلال الرسائل النصية القصيرة، أرسل رقم الرخصة إلى 6969 (دو/اتصالات) للحصول على اذن الدفع.

Now you can renew your trade license by sending a text message (SMS). Send your trade license number to 6969 (Du/ Etisalat) to receive payment voucher.

Get FREE access to Zoho One for the first year
احصل على زوهو ون مجاناً للسنة الأولى
Zoho.com/det



وثيقة إلكترونية معتمدة ومصادرة بدون توقيع من دائرة الإقتصاد والسياحة في دبي. لمراجعة صحة البيانات الواردة في الرخصة يرجى مسح رمز الاستجابة السريعة this is a certified e-document issued without signature by the department of Economy and Tourism .Kindly Scan the QR Code to Verify the certificate



ملحق الشركاء Partners

تفاصيل الرخصة / License Details

D&B D-U-N-S No. 561427576 الرقم العالمي License No. 301205 رقم الرخصة

اصحاب الرخصة / License Partners

Share / الحصص	Sr. No./مسلسل الشخص	Nationality / الجنسية	Name / الاسم
99.0000000%	331977	الامارات / United Arab Emirates	زجاج ذ.م.م / glass llc
1.0000000%	61381	الامارات / United Arab Emirates	DUBAI INVESTMENTS P.J.S.C / دبي للاستثمار (ش. م. ع)

Print Date 23/08/2024 8:43 تاريخ الطباعة Receipt No. 15959323 رقم الإيصال



الإمارات
THE EMIRATES

يمكنك الآن تجديد رخصتك التجارية من خلال الرسائل النصية القصيرة، أرسل رقم الرخصة إلى 6969 (دو/اتصالات) للحصول على اذن الدفع.

Now you can renew your trade license by sending a text message (SMS). Send your trade license number to 6969 (Du/ Etisalat) to receive payment voucher.

Get FREE access to Zoho One for the first year

احصل على زوهو ون مجاناً للسنة الأولى



Zoho.com/det

وثيقة إلكترونية معتمدة ومصادرة بدون توقيع من دائرة الاقتصاد والسياحة في دبي. لمراجعة صحة البيانات الواردة في الرخصة يرجى مسح رمز الاستجابة السريعة this is a certified e-document issued without signature by the department of Economy and Tourism. Kindly Scan the QR Code to Verify the certificate

شهادة شهر قيد شركة في السجل التجاري
Commercial Register

تفاصيل القيد / Register Details

Main Lice. Nr	301205	رقم الرخصة الأم	Register No.	47454	رقم القيد
Business Name	الإمارات للزجاج (شركة ذات مسؤولية محدودة) EMIRATES GLASS (L.L.C.)				
Legal Type	Limited Liability Company(LLC)	الشكل القانوني	ذات مسؤولية محدودة		
Expiry Date	27/08/2025	تاريخ الإنتهاء	Reg. Date	11/11/2000	تاريخ الإصدار
D&B D-U-N-S ® No.	561427576				الرقم العالمي

تفاصيل رأس المال / Capital Details

Nominated	35,425,000.00	الإسمى
Paid	35,425,000	المدفوع
No. of Shares	0	عدد الأسهم
Currency	UAE Dirhams	العملة

عنوان الرخصة / License Address

مكتب ملك عقارات حكومة دبي - القوز

عنوان السجل التجاري / Commerce Address

مكتب ملك عقارات حكومة دبي - القوز - بر دبي - ص.ب:379333

أنشطة السجل / Register Activities

Safety Glass Manufacturing	صناعة زجاج الامان
Glass Mirrors Manufacturing	صناعة المرايا الزجاجية
Reflective, Enamelled & Insulant Glass Production	انتاج الزجاج العاكس المطلي والمعازل
Fire Resistant & Retardant Materials Manufacturing	صناعة المواد المقاومة والمائعة لإنتشار الحريق
Toughened or Laminated Flat Glass Manufacturing	صناعة الزجاج المسطح المقسى او المنضد
Fire & Smoke Resistant Doors, Windows, Walls & Partitions Installation	تركيب الأبواب والنوافذ والجدران والقواطع المقاومة للحريق والدخان
Metal Doors & Windows Manufacturing	صناعة الابواب والنوافذ المعدنية
Fire Resistant Doors Manufacturing	صناعة الأبواب المقاومة للحريق

Print Date 23/08/2024 8:43 تاريخ الطباعة

Receipt No. 15959323

رقم الإيصاف

الإمارات
THE EMIRATES

يمكنك الآن تجديد رخصتك التجارية من خلال الرسائل النصية القصيرة، أرسل رقم الرخصة إلى 6969 (دو/اتصالات) للحصول على إذن الدفع.

Now you can renew your trade license by sending a text message (SMS). Send your trade license number to 6969 (Du/ Etisalat) to receive payment voucher.

Get FREE access to Zoho One for the first year
احصل على زوهو ون مجاناً للسنة الأولى
Zoho.com/det



وثيقة إلكترونية معتمدة وصادرة بدون توقيع من دائرة الاقتصاد والسياحة في دبي. لمراجعة صحة البيانات الواردة في الرخصة يرجى مسح رمز الاستجابة السريعة this is a certified e-document issued without signature by the department of Economy and Tourism .Kindly Scan the QR Code to Verify the certificate

شهادة تسجيل العضوية

Membership Certificate

License no.	301205
Membership no.	40175
Registration no.	47454
Business Name	EMIRATES GLASS (L.L.C.)
Legal Status	Limited Liability Company(LLC)
Activity	Safety Glass Manufacturing Glass Mirrors Manufacturing Reflective, Enamelled & Insulant Glass Production Toughened or Laminated Flat Glass Manufacturing Fire Resistant & Retardant Materials Manufacturing Fire & Smoke Resistant Doors, Windows, Walls & Partitions Installation Fire Resistant Doors Manufacturing Metal Doors & Windows Manufacturing
Member Since	28/08/1996
Date of Issue	28/08/1996
Expiry Date	27/08/2025

رقم الرخصة	301205
رقم العضوية	40175
رقم السجل التجاري	47454
الاسم التجاري	الامارات للزجاج (ش. ذ. م. م)
الشكل القانوني	ذات مسؤولية محدودة
نوع النشاط	صناعة زجاج الامان صناعة المرايا الزجاجية انتاج الزجاج العاكس المطلي والعازل صناعة الزجاج المسطح المقسى او المنضد صناعة المواد المقاومة والممانعة لإنتشار الحريق تركيب الأبواب والنوافذ والجدران والقواطع المقاومة للحريق والدخان صناعة الأبواب المقاومة للحريق صناعة الابواب والنوافذ المعدنية
تاريخ الإنتساب	28/08/1996
تاريخ الإصدار	28/08/1996
تاريخ الإنتهاء	27/08/2025

Remarks

This certificate shall be invalid incase of any alteration without chamber's authorization

For online verification of this Certificate, please visit our website
<http://www.dubaichamber.ae/verify>

غرفة تجارة وصناعة دبي
Dubai Chamber of Commerce & Industry

هاتف (+971) 4 2280000 | Tel (Outside UAE) | 800 CHAMBER (800 2426237) | Tel (Within UAE) | P.O. Box 1457 - Dubai, U.A.E.

فاكس (+971) 4 2211646 | customercare@dubaichamber.ae | www.dubaichamber.ae

الملاحظات

تعتبر هذه الشهادة لاغية في حال أي كسب أو تعديل عليها دون اعتماد ذلك من الغرفة

للتأكد من صحة بيانات الشهادة يرجى الرجوع إلى موقع الغرفة
<http://www.dubaichamber.ae/verify>

Warranties

EmiCool® High Performance Coated Glass Stock and Coated Processed Products

Emirates Glass LLC, hereafter referred to as “Emirates Glass”, warrants that its architectural products are within normal industry tolerances and standards as set forth in their technical leaflets.

In addition, Emirates Glass warrants the product EmiCool®, hereafter referred to as “EmiCool coated glass”, under the conditions and for the period of years indicated, is subject to the limitations set forth below. The Warranty described in each sub-paragraph below, relate only to EmiCool coated glass.

1. Limited Warranty

- (A) During a period of ten (10) years after the date of delivery, the EmiCool coated glass is warranted, subject to the terms and conditions of this Warranty, not to develop peeling or deterioration in the metallic film under normal conditions.
- (B) Emirates Glass LLC Coated Stock Products have a recommended shelf life. Stock products that have been stored in excess of this recommendation prior to processing will be considered “out of warranty” and no claim for replacement will be entertained.
- (C) The liability of Emirates Glass under this Warranty for defective EmiCool coated glass is limited to replacement of such EmiCool coated glass without charge on an ex-factory basis. In no event shall Emirates Glass be liable for any additional costs.
- (D) This Warranty shall be void if the EmiCool coated glass is installed contrary to the instructions of Emirates Glass or if the coating is damaged by improper handling or installation or if the EmiCool coated glass should be glazed with the coating facing the exterior of the building without protection. Similarly the warranty shall become void if the coated surface is exposed continuously to the external atmosphere or if the coating is damaged because of scratches or abrasions, which may be caused if abrasive, cleaners are used on the metal film surface.
- (E) Emirates Glass reserves the right to inspect any EmiCool coated glass, which is alleged to be defective, prior to accepting their liability under this Warranty.
- (F) A representative of, Emirates Glass or of representative/ agent/ distributor or a third party inspector may carry out the inspection. Emirates Glass may, at their discretion, ask for the return of the defective EmiCool coated glass to their factory. If such is not presented to Emirates Glass or their representatives for inspection as stated above, Emirates Glass will not entertain the claim for replacement.
- (G) Any EmiCool coated glass that may be installed improperly, contrary to the instructions from Emirates Glass, will not be covered under this Warranty. Any EmiCool coated glass installed in structural or butt-joint systems similarly, will not be covered under this Limited Warranty, unless with specific prior written consent from Emirates Glass for its intended use. EmiCool coated glass exported by a third party to a destination outside the United Arab Emirates, without the prior written consent of Emirates Glass, will not be covered under this Warranty.
- (H) Except for the specific Warranty described above, there are no express or implied warranties and there are no warranties of merchantability or fitness for a particular purpose with respect to the EmiCool coated glass or any part or component thereof and no warranty shall be implied by operation of law or otherwise in any jurisdiction whatsoever.
- (I) This Warranty cannot be altered or modified in any manner whatsoever by any representative of Emirates Glass or their representatives, agents or distributors without the same being confirmed in writing by Emirates Glass.
- (J) The liability of Emirates Glass shall be limited to the extent of remedies defined hereunder under this Warranty.

2. Limitation On Remedies In The Event of Default

- (A) All claims under this Warranty must be presented in writing to the office of Emirates Glass at Dubai, with a copy to the local representative/agent/distributor within the period of the Warranty.
- (B) Subject to acceptance by Emirates Glass of their liability and providing a replacement free of cost as herein before stated, the period of the Warranty on such replacement will extend only for the balance of the original Warranty Period on the defective glass replaced under this Warranty.
- (C) Other than the limitation of the liability specifically stated under this Warranty, Emirates Glass will not be liable to reimburse any party for any costs incurred by any party in connection with the failure of EmiCool coated glass such as, but not limited to, costs of inspection, costs of removal, cost of delivery of the damaged glass to Emirates Glass, cost of delivery of replacement unit and any costs, incidental, consequential or indirect, related to or arising out of the failure of the said EmiCool coated glass.

3. Unwarranted Products

This Warranty applies to the EmiCool coated glass product range of Emirates Glass only.

4. Disclaimer Of Implied Warranties For Emirates Glass Products

The Warranty by Emirates Glass stated above is exclusive and replaces any and all other warranties, whether verbal, written or implied, and supersedes any verbal or written warranty or representations made or implied by any employee of Emirates Glass or their representatives, agents or distributors or in any published document(s) of Emirates Glass such as manuals, brochures and other publicity material.

5. Non-waiver

- (A) Temporary waiver, in writing, by Emirates Glass of a deviation from any of the conditions in this Limited Warranty shall not be construed as a waiver of any other condition nor a continuing waiver of the condition temporarily waived.

6. Design Considerations

Due to the high absorption values created by the different coating types, EGL recommends the use of heat-treated glass only. However the use of annealed glass, due to minimum coating/ tempering product limits shall have no effect on this warranty which shall be valid for annealed or heat treated, single glazed or double glazed Emicool products. Emirates Glass does not, however accept liability for any annealed Emicool product which has broken due to thermal safety reasons. The surface of the coated glass shall not be superimposed with any permanent film, paint, or marking, which may damage coating.

7. Failures

The following failures are by way of illustration and not of limitation and are not covered by the Warranty of EmiCool coated glass and are the sole responsibility of the customer.

The above warranties are subject to the following terms and conditions. These terms and conditions supersede all purchaser requests for variations unless Emirates Glass LLC accepts such variations in writing prior to manufacturing and shipment of materials.

- (A) The warranty is limited to the replacement of the defective product and does not include shipping or labor costs for removal or reinstallation.

- (B) The warranty does not apply to glass which has not been unpacked, transported, handled, stored, installed or used in accordance with Emirates Glass LLC instructions or industry guidelines.

In common with all International Glass Processors and accepted industry practice, Emirates Glass LLC offer does not warrant any glass against breakage, surface damage or scratches from any cause including Nickel Sulphide inclusions.

- (C) The warranty does not apply to insulate glass units where the client has supplied any materials except those approved by Emirates Glass LLC.
- (D) The warranty does not apply to replacement glass beyond the period covering the original lite.
- (E) The Emirates Glass LLC warranty does not apply to material that is not paid for in full.
- (F) Emirates Glass LLC reserves the right to suspend or withdraw any warranty where our specific terms and conditions including full payment are not met.

Note:

1. The information contained in brochures, data sheets, and/or any other publications of Emirates Glass is offered in respect of products fabricated by Emirates Glass as assistance only to the customers. All documents referred to above do not constitute a warranty or merchantability or a warranty that the material is fit for any purpose or use nor a warranty against glass breakage or any other warranty, express or implied.
2. Emirates Glass LLC is not to be held liable for damages or expenses due to late delivery of raw materials; manufacturing delays; defective or broken products (except to the extent of express warranty); internal errors; improper handling or negligence by Purchaser; delays due to acts of war, strikes, fires, or freight carriers; priorities of the government or any department thereof; natural disasters; or acts that are unavoidable and beyond the control of Emirates Glass LLC.
3. Emirates Glass LLC reserves the right to amend, change and insert clauses and exclusions into the warranty without prior notice or publication.

EmiTherm® Insulated Glazed Unit

Emirates Glass LLC, hereafter referred to as “Emirates Glass”, warrants that its architectural products are within normal industry tolerances and standards as set forth in their technical leaflets.

In addition, Emirates Glass warrants the product EmiTherm®, hereafter referred to as “EmiTherm”, under the conditions, and for the period of years and is subject to the limitations set forth below. The Warranty described in each sub-paragraph below, relate only to EmiTherm units.

1. Limited Warranty

- (A) During a period of ten (10) years after the date of delivery, the EmiTherm unit is warranted, subject to the terms and conditions of this Warranty, not to develop material obstruction of vision as a result of dust or film formation on the internal glass surface caused by failure of the hermetic seal, except where such failure of hermetic seal is caused, in whole or in part, by fracture or breakage on any portion of the glass panes forming EmiTherm.
- (B) The liability of Emirates Glass under this Warranty for defective EmiTherm units is limited to replacement of such EmiTherm units without charge on an ex-factory basis. In no event shall Emirates Glass be liable for any additional costs.
- (C) This Warranty shall be void if the EmiTherm units are installed contrary to the instructions of Emirates Glass or if the unit is damaged by improper handling or installation or if the unit has been subject to abnormal stresses from application of excessive heat or excessive vibration or as a result of insufficient provision in structural design for thermal expansion and contraction or if installed using materials which do not remain fully resilient during the period of the Warranty or if the materials and methods used in installation of the units are such that they do not completely repel water during the tenure of this Warranty.
- (D) Emirates Glass reserves the right to inspect any EmiTherm unit, which is alleged to be defective, prior to accepting their liability under this Warranty.
- (E) The inspection may be carried out by a representative of, Emirates Glass or of representative / agent/distributor or a third party inspector. Emirates Glass may, at their discretion, ask for the return of the defective EmiTherm unit to their factory. If such unit is not presented to Emirates Glass or their representatives for inspection as stated above, Emirates Glass will not entertain the claim for replacement.
- (F) Any EmiTherm unit that may be installed improperly, contrary to the instructions from Emirates Glass, or such units as are installed on watercraft, land vehicles, trailers, railway carriages, within or around swimming pools, solar collectors or commercial refrigeration products, will not be covered under this Warranty. Any EmiTherm units installed in skylights or sloped glazing applications or butt-glazing with proprietary systems, similarly will not be covered under this Limited Warranty, unless the proposed details have been subject to technical review and approval by Emirates Glass for the intended use. Emitherm units exported by a third party to a destination outside the United Arab Emirates, without the prior written consent of Emirates Glass, will not be covered under this Warranty.
- (G) Except for the specific Warranty described above, there are no express or implied warranties and there are no warranties of merchantability or fitness for a particular purpose with respect to the EmiTherm units or any part or component thereof and no warranty shall be implied by operation of law or otherwise in any jurisdiction whatsoever.
- (H) This Warranty cannot be altered or modified in any manner whatsoever by any representative of Emirates Glass or their representatives, agents or distributors without the same being confirmed in writing by Emirates Glass.

- (I) The liability of Emirates Glass shall be limited to the extent of remedies defined hereunder under this Warranty.
- (J) Emirates Glass liability is limited to replacement of the defective units only, installation, removal costs etc must be covered by the installation company.
- (K) Customer must provide the back to back warranty regarding the installation of the units in accordance with Emirates Glass installation instructions.

2. Limitation On Remedies In The Event of Default

- (A) All claims under this Warranty must be presented in writing to the office of Emirates Glass at Dubai, with a copy to the local representative/agent/distributor within the period of the Warranty.
- (B) Subject to acceptance by Emirates Glass of their liability and providing a replacement unit free of cost as hereinbefore stated, the period of the Warranty on such replacement units will extend only for the balance of the original Warranty Period on the defective unit replaced under this Warranty.
- (C) Other than the limitation of the liability specifically stated under this Warranty, Emirates Glass will not be liable to reimburse any party for any costs incurred by any party in connection with the failure of EmiTherm units such as, but not limited to, costs of inspection, costs of removal, cost of delivery of the damaged unit to Emirates Glass, cost of delivery of replacement unit and any costs, incidental, consequential or indirect, related to or arising out of the failure of the said EmiTherm unit.

3. Unwarranted Products

This Warranty applies to the EmiTherm product range of Emirates Glass only.

4. Disclaimer Of Implied Warranties For Emirates Glass Products

The Warranty by Emirates Glass stated above is exclusive and replaces any and all other warranties, whether verbal, written or implied, and supercedes any verbal or written warranty or representations made or implied by any employee of Emirates Glass or their representatives, agents or distributors or in any published document(s) of Emirates Glass such as manuals, brochures and other publicity material.

5. Non-waiver

Temporary waiver, in writing, by Emirates Glass of a deviation from any of the conditions in this Limited Warranty shall not be construed as a waiver of any other condition nor a continuing waiver of the condition temporarily waived.

6. Design Considerations

EmiTherm units incorporating annealed glass by virtue of the specification of the buyer shall not be used in hazardous locations. The surface of the annealed glass shall not be superimposed with any permanent film, paint or marking, which may alter the thermal safety of the glass. For hazardous locations and locations requiring superimposing of films, paint or marking, as stated above, must incorporate approved safety glass – heat treated, laminated or wired, as necessary. Acid-Etched (anti-Reflective) treatment on surface #1 of the Emitherm units is specifically excluded from this warranty.

7. Failures

The following failures are by way of illustration and not of limitation and are not covered by the Warranty of EmiTherm units and are the sole responsibility of the customer.

The above warranties are subject to the following terms and conditions. These terms and conditions supersede all purchaser requests for variations unless Emirates Glass LLC accepts such variations in writing prior to manufacturing and shipment of materials.

- (A) The warranty is limited to the replacement of the defective product and does not include shipping or labor costs for removal or reinstallation.
- (B) The warranty does not apply to glass which has not been unpacked, transported, handled, stored, installed or used in accordance with Emirates Glass LLC instructions or industry guidelines.
- (C) In common with all International Glass Processors and accepted industry practice, Emirates Glass LLC offer does not warrant any glass against breakage, surface damage or scratches from any cause.
- (D) The warranty does not apply to insulated glass units where the client has supplied any materials.
- (E) The warranty does not apply to replacement glass beyond the period covering the original lite.
- (F) Warranty for products installed outside of the United Arab Emirates will be issued contingent upon consideration of product application and warranty requested.
- (G) The Emirates Glass LLC warranty does not apply to material that is not paid for in full.

Note:

1. The information contained in brochures, data sheets, and/or any other publications of Emirates Glass is offered in respect of products fabricated by Emirates Glass as assistance only to the customers. All documents referred to above do not constitute a warranty or merchantability or a warranty that the material is fit for any purpose or use nor a warranty against glass breakage or any other warranty, express or implied.
2. Emirates Glass LLC is not to be held liable for damages or expenses due to late delivery of raw materials; manufacturing delays; defective or broken products (except to the extent of express warranty); internal errors; improper handling or negligence by Purchaser; delays due to acts of war, strikes, fires, or freight carriers; priorities of the government or any department thereof; natural disasters; or acts that are unavoidable and beyond the control of Emirates Glass LLC.
3. Emirates Glass LLC reserves the right to amend, change and insert clauses and exclusions into the warranty without prior notice or publication.

EmiFrit™ Glass Spandrel Panels

Emirates Glass LLC, hereafter referred to as “Emirates Glass”, warrants that its architectural products are within normal industry tolerances and standards as set forth in their technical leaflets.

In addition, Emirates Glass warrants the product EmiFrit™ hereafter referred to as “spandrel glass”, under the conditions and for the period of years indicated, is subject to the limitations set forth below. The Warranty described in each sub-paragraph below, relate only to spandrel glass.

Description:

Emirates Glass LLC - EmiFrit™ - is a single sheet toughened safety glass with a weather resistant and non-ageing coloured ceramic enamel coating fused into the surface. It can be installed on both the weather facing or internal facing surface as required by the specified design. The high temperature fusing process achieves an opaque (but not totally light blocking) scratch resistant coating. The paint application can be from one hundred percent cover or lower and may also be used to create permanently fused designs onto the glass.

1. Limited Warranty

- (A) During a period of ten (10) years after the date of delivery, the spandrel glass is warranted, subject to the terms and conditions of this Warranty, not to develop peeling or deterioration in the paint under normal conditions.
- (B) The liability of Emirates Glass under this Warranty for defective spandrel glass is limited to replacement of such spandrel glass without charge on an ex-factory basis. In no event shall Emirates Glass be liable for any additional costs.
- (C) This Warranty shall be void if the spandrel glass is installed contrary to the instructions of Emirates Glass or if the paint is damaged by improper handling. Similarly the warranty shall become void if the coated surface coating is damaged because of scratches or abrasions, which may be caused if abrasive cleaners are used on the painted surface.
- (D) Emirates Glass reserves the right to inspect any spandrel glass, which is alleged to be defective, prior to accepting their liability under this Warranty.
- (E) A representative of, Emirates Glass or of representative/ agent/ distributor or a third party inspector may carry out the inspection. Emirates Glass may, at their discretion, ask for the return of the defective spandrel glass to their factory. If such is not presented to Emirates Glass or their representatives for inspection as stated above, Emirates Glass will not entertain the claim for replacement.
- (F) Any spandrel glass that may be installed improperly, contrary to the instructions from Emirates Glass, will not be covered under this Warranty. Any spandrel glass installed in structural or butt-joint systems similarly, will not be covered under this Limited Warranty, unless with specific prior written consent from Emirates Glass for its intended use. Spandrel glass exported by a third party to a destination outside the United Arab Emirates, without the prior written consent of Emirates Glass, will not be covered under this Warranty.
- (G) Except for the specific Warranty described above, there are no express or implied warranties and there are no warranties of merchantability or fitness for a particular purpose with respect to the spandrel glass or any part or component thereof and no warranty shall be implied by operation of law or otherwise in any jurisdiction whatsoever.
- (H) This Warranty cannot be altered or modified in any manner whatsoever by any representative of Emirates Glass or their representatives, agents or distributors without the same being confirmed in writing by Emirates Glass.
- (I) The liability of Emirates Glass shall be limited to the extent of remedies defined hereunder under this Warranty.

- (J) Emirates Glass liability is limited to replacement of the defective spandrel panel units only, installation, removal costs etc. must be covered by the installation company.
- (K) Customer must provide the back-to-back warranty regarding the installation of the units in accordance with Emirates Glass installation instructions.

2. Limitation On Remedies In The Event Of Default

- (A) All claims under this Warranty must be presented in writing to the office of Emirates Glass at Dubai, with a copy to the local representative/agent/distributor within the period of the Warranty.
- (B) Subject to acceptance by Emirates Glass of their liability and providing a replacement free of cost as herein before stated, the period of the Warranty on such replacement will extend only for the balance of the original Warranty Period on the defective glass replaced under this Warranty.
- (C) Other than the limitation of the liability specifically stated under this Warranty, Emirates Glass will not be liable to reimburse any party for any costs incurred by any party in connection with the failure of spandrel glass such as, but not limited to, costs of inspection, costs of removal, cost of delivery of the damaged glass to Emirates Glass, cost of delivery of replacement unit and any costs, incidental, consequential or indirect, related to or arising out of the failure of the said spandrel glass.

3. Unwarranted Products

This Warranty applies to the spandrel glass product range of Emirates Glass only.

4. Disclaimer Of Implied Warranties For Emirates Glass Products

The Warranty by Emirates Glass stated above is exclusive and replaces any and all other warranties, whether verbal, written or implied, and supersedes any verbal or written warranty or representations made or implied by any employee of Emirates Glass or their representatives, agents or distributors or in any published document(s) of Emirates Glass such as manuals, brochures and other publicity material.

5. Non-waiver

Temporary waiver, in writing, by Emirates Glass of a deviation from any of the conditions in this Limited Warranty shall not be construed as a waiver of any other condition nor a continuing waiver of the condition temporarily waived.

6. Design Considerations

Due to the high absorption values created by the different paint types, Emirates Glass recommends the use of heat-treated glass only. However the use of annealed glass, due to minimum coating/ tempering product limits shall have no effect on this warranty which shall be valid for annealed or heat treated, single glazed or double glazed Emirates Glass products. Emirates Glass does not, however accept liability for any annealed spandrel product which has broken due to thermal safety reasons. The surface of the spandrel glass shall not be superimposed with any other permanent film, paint, or marking, which may damage ceramic coating.

7. Failures

The following failures are by way of illustration and not of limitation and are not covered by the Warranty of EmiCool coated glass and are the sole responsibility of the customer.

The above warranties are subject to the following terms and conditions. These terms and conditions supersede all purchaser requests for variations unless Emirates Glass LLC accepts such variations in writing prior to manufacturing and shipment of materials.

- (A) The warranty is limited to the replacement of the defective product and does not include shipping or labor costs for removal or reinstallation.
- (B) The warranty does not apply to glass which has not been unpacked, transported, handled, stored, installed or used in accordance with Emirates Glass LLC instructions or industry guidelines. In common with all International Glass Processors and accepted industry practice, Emirates Glass LLC offer does not warrant any glass against breakage, surface damage or scratches from any cause including Nickel Sulphide inclusions.
- (C) The warranty does not apply to insulated glass units where the client has supplied any materials except those approved by Emirates Glass LLC.
- (D) The warranty does not apply to replacement glass beyond the period covering the original lite.
- (E) The Emirates Glass LLC warranty does not apply to material that is not paid for in full.
- (F) Emirates Glass LLC reserves the right to suspend or withdraw any warranty where our specific terms and conditions including full payment are not met.

Note:

1. The information contained in brochures, data sheets, and/or any other publications of Emirates Glass is offered in respect of products fabricated by Emirates Glass as assistance only to the customers. All documents referred to above do not constitute a warranty or merchantability or a warranty that the material is fit for any purpose or use nor a warranty against glass breakage or any other warranty, express or implied.
2. Emirates Glass LLC is not to be held liable for damages or expenses due to late delivery of raw materials; manufacturing delays; defective or broken products (except to the extent of express warranty); internal errors; improper handling or negligence by Purchaser; delays due to acts of war, strikes, fires, or freight carriers; priorities of the government or any department thereof; natural disasters; or acts that are unavoidable and beyond the control of Emirates Glass LLC.
3. Emirates Glass LLC reserves the right to amend, change and insert clauses and exclusions into the warranty without prior notice or publication.



Street 10, Al Quoz Industrial Area 4,
P.O. Box 29769, Dubai, UAE.

+971 4 7094700

+971 4 3471440

info@emiratesglass.com

emiratesglass.com